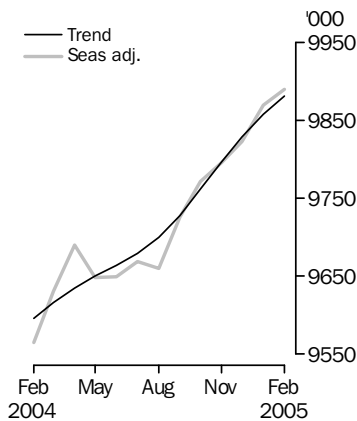


LABOUR FORCE

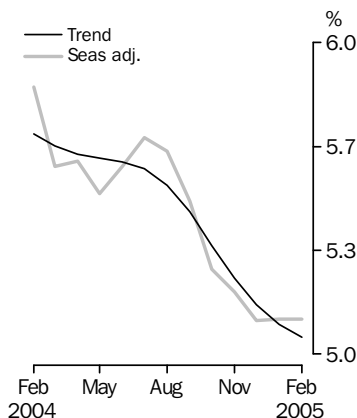
AUSTRALIA

EMBARGO: 11.30AM (CANBERRA TIME) THURS 10 MAR 2005

Employed Persons



Unemployment rate



INQUIRIES

For further information about these and related statistics, contact the National Information and Referral Service on 1300 135 070 or Erika Maxim on Canberra (02) 6252 6525.

KEY FIGURES

	Jan 2005	Feb 2005	Jan 05 to Feb 05	Feb 04 to Feb 05
Trend				
Employed persons ('000)	9 857.9	9 881.3	23.4	3.0 %
Unemployed persons ('000)	529.4	526.2	-3.2	-9.4 %
Unemployment rate (%)	5.1	5.1	0.0 pts	-0.7 pts
Participation rate (%)	64.0	64.1	0.1 pts	0.5 pts
Seasonally Adjusted				
Employed persons ('000)	9 869.7	9 889.7	20.0	3.4 %
Unemployed persons ('000)	531.9	533.0	1.1	-10.4 %
Unemployment rate (%)	5.1	5.1	0.0 pts	-0.7 pts
Participation rate (%)	64.1	64.1	0.1 pts	0.7 pts

KEY POINTS

TREND ESTIMATES (MONTHLY CHANGE)

- EMPLOYMENT increased to 9,881,300
- UNEMPLOYMENT decreased to 526,200
- UNEMPLOYMENT RATE remained at 5.1%
- PARTICIPATION RATE increased to 64.1%

SEASONALLY ADJUSTED ESTIMATES (MONTHLY CHANGE)

EMPLOYMENT

- increased by 20,000 to 9,889,700. Full-time employment increased by 37,900 to 7,079,600 while part-time employment decreased by 17,900 to 2,810,100.

UNEMPLOYMENT

- increased by 1,100 to 533,000. The number of persons looking for full-time work decreased by 4,500 to 381,200 while the number of persons looking for part-time work increased by 5,600 to 151,800.

UNEMPLOYMENT RATE

- remained at 5.1%. The male unemployment rate remained at 4.9% while the female unemployment rate increased marginally to 5.4%.

PARTICIPATION RATE

- increased slightly, but the rounded estimate remained at 64.1%.

NOTES

FORTHCOMING ISSUES

<i>ISSUE</i>	<i>RELEASE DATE</i>
March 2005	7 April 2005
April 2005	12 May 2005
May 2005	9 June 2005
June 2005	7 July 2005
July 2005	11 August 2005
August 2005	8 September 2005



ROUNDING

Estimates of monthly change shown on the front cover have been calculated using unrounded estimates, and may be different from, but are more accurate than, movements obtained from the rounded estimates. The graphs on the front cover also depict unrounded estimates.

SAMPLING ERRORS

The estimates in this publication are based on a sample survey. Because the entire population is not enumerated, the published estimates and the movements derived from them are subject to sampling variability. Standard errors give a measure of this variability and appear on pages 27 and 28.

The 95% confidence intervals below provide another way of looking at the variability inherent in estimates from sample surveys. The interval bounded by the two limits is the 95% confidence interval. A 95% confidence interval has a 95% chance of including the true value of the estimate.

MOVEMENTS IN SEASONALLY ADJUSTED SERIES BETWEEN JANUARY AND FEBRUARY 2005



	<i>Monthly change</i>	<i>95% Confidence interval</i>
Total Employment	20 000	-17 400 to 57 400
Total Unemployment	1 100	-12 700 to 14 900
Unemployment rate	0.0 pts	-0.2 pts to 0.2 pts
Participation rate	0.1 pts	-0.1 pts to 0.3 pts

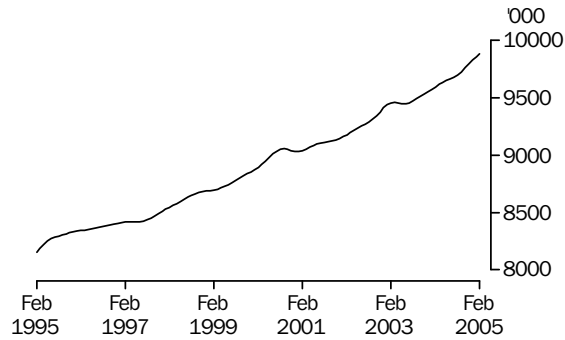


Dennis Trewin
Australian Statistician

PRINCIPAL LABOUR FORCE SERIES TREND ESTIMATES

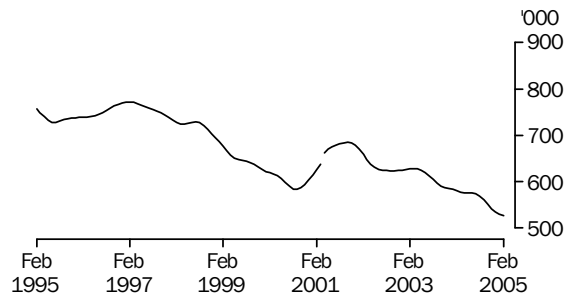
EMPLOYED PERSONS

The trend estimate of employed persons generally rose from 8,151,800 in February 1995 to 9,055,400 in September 2000. The trend then fell slightly to 9,034,700 in January 2001, before rising to 9,460,200 in March 2003. The trend then fell for three months before rising to stand at 9,881,300 in February 2005.



UNEMPLOYED PERSONS

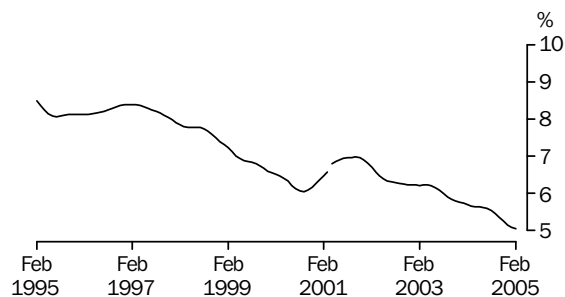
The trend estimate of unemployed persons rose from 728,100 in July 1995 to 771,800 in February 1997. The trend then fell to 583,300 in September 2000 before rising to 685,100 in October 2001. The trend has since generally fallen to stand at 526,200 in February 2005.



Series break at April 2001; see paragraph 13 of Explanatory Notes.

UNEMPLOYMENT RATE

The trend unemployment rate rose slowly from 8.1% in July 1995 to 8.4% in February 1997. After falling to 6.1% in September 2000, the trend rose to 7.0% in October 2001. The trend has since generally fallen to stand at 5.1% in February 2005.



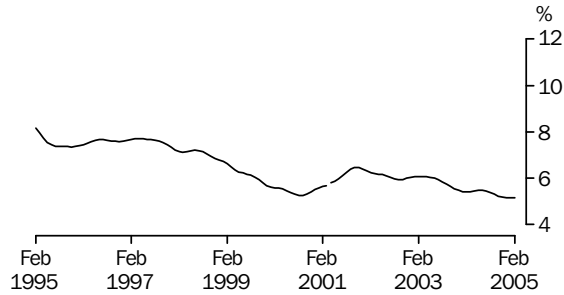
Series break at April 2001; see paragraph 13 of Explanatory Notes.

STATES TREND ESTIMATES

UNEMPLOYMENT RATE

NEW SOUTH WALES

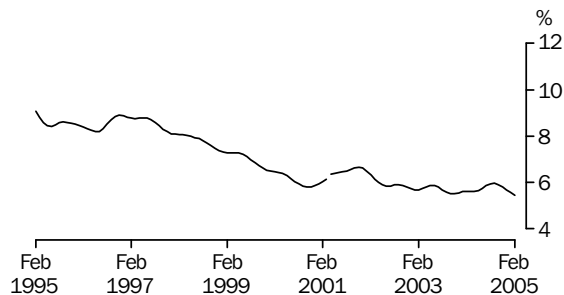
The trend unemployment rate for New South Wales rose slowly from 7.4% in November 1995 to 7.7% in April 1997, before falling to 5.3% in August 2000. The trend rate then rose to 6.5% in November 2001, before generally falling to stand at 5.2% in February 2005.



Series break at April 2001; see paragraph 13 of Explanatory Notes.

VICTORIA

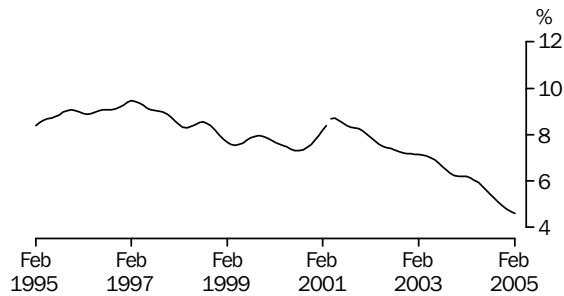
The trend estimate of the unemployment rate for Victoria decreased from 9.1% in February 1995 to 8.2% in May 1996. The trend then rose to 8.9% in November 1996, before falling steadily to 5.8% in October 2000. The trend then rose to 6.7% in November 2001, before generally declining to 5.5% in February 2005.



Series break at April 2001; see paragraph 13 of Explanatory Notes.

QUEENSLAND

The trend unemployment rate for Queensland rose from 8.4% in February 1995 to 9.5% in February 1997, before generally falling to 7.3% in August 2000. After rising to 8.7% in May 2001, the trend rate has since fallen and stands at 4.6% in February 2005.

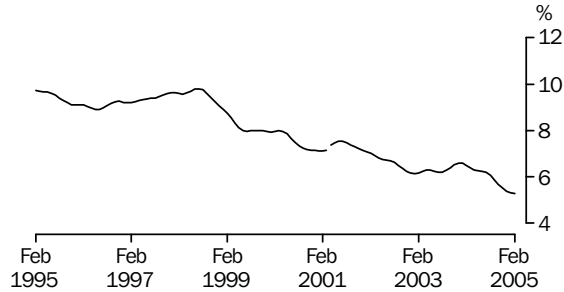


Series break at April 2001; see paragraph 13 of Explanatory Notes.

STATES TREND ESTIMATES *continued*

SOUTH AUSTRALIA

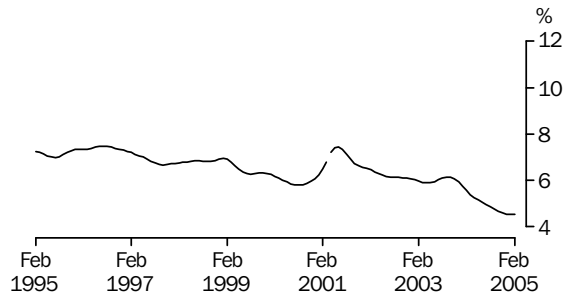
The trend unemployment rate for South Australia declined from 9.7% in February 1995 to 8.9% in June 1996. The trend then rose slowly to 9.8% in July 1998 before generally falling to stand at 5.3% in February 2005.



Series break at April 2001; see paragraph 13 of Explanatory Notes.

WESTERN AUSTRALIA

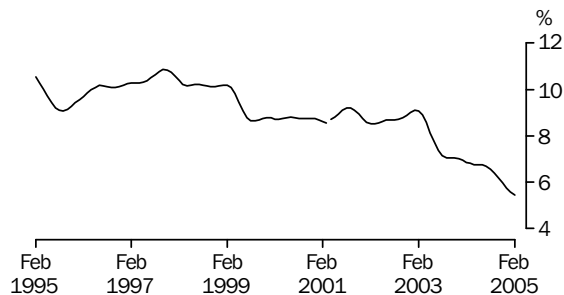
The trend estimate of the unemployment rate for Western Australia rose from 7.0% in July 1995 to 7.5% in July 1996, before generally falling to 5.8% in August 2000. The trend then rose sharply to 7.4% in June 2001 before falling to 4.5% in February 2005.



Series break at April 2001; see paragraph 13 of Explanatory Notes.

TASMANIA

The trend estimate of the unemployment rate for Tasmania fell from 10.5% in February 1995 to 9.1% in September 1995. After rising to 10.9% in October 1997, the trend generally fell to 8.6% in September 1999. Apart from a rise in 2001 the trend estimate remained relatively steady until 2003. The trend has since fallen from 9.1% in January 2003 to 5.4% in February 2005.



Series break at April 2001; see paragraph 13 of Explanatory Notes.

LABOUR FORCE STATUS (AGED 15 YEARS & OVER): Trend

	EMPLOYED			UNEMPLOYED		UNEMPLOYMENT RATE			Participation rate
	Full time	Part time	Total	Looking for f/t work	Total	Labour force	Looking for f/t work	Total	
	'000	'000	'000	'000	'000	'000	%	%	
MALES									
February 2002	4 376.6	733.2	5 109.9	314.8	380.8	5 490.6	6.7	6.9	72.0
February 2003	4 444.4	769.9	5 214.2	287.4	350.8	5 565.0	6.1	6.3	71.8
2004									
February	4 549.0	789.0	5 338.0	255.2	313.1	5 651.1	5.3	5.5	71.8
March	4 558.8	787.6	5 346.4	256.0	313.4	5 659.8	5.3	5.5	71.8
April	4 566.3	786.2	5 352.6	256.3	313.4	5 666.0	5.3	5.5	71.8
May	4 570.8	786.1	5 356.9	255.6	313.2	5 670.0	5.3	5.5	71.7
June	4 572.5	788.0	5 360.5	253.6	312.5	5 673.1	5.3	5.5	71.6
July	4 572.5	792.1	5 364.6	250.7	311.6	5 676.2	5.2	5.5	71.5
August	4 572.7	797.8	5 370.6	247.0	309.6	5 680.2	5.1	5.5	71.5
September	4 576.2	804.2	5 380.5	242.7	306.0	5 686.4	5.0	5.4	71.5
October	4 584.3	810.1	5 394.4	238.0	300.8	5 695.2	4.9	5.3	71.5
November	4 594.8	815.1	5 409.9	233.6	295.0	5 704.9	4.8	5.2	71.6
December	4 606.6	818.5	5 425.1	229.6	289.6	5 714.7	4.7	5.1	71.6
2005									
January	4 618.6	820.7	5 439.3	226.0	284.9	5 724.3	4.7	5.0	71.7
February	4 629.9	821.6	5 451.5	223.2	281.0	5 732.4	4.6	4.9	71.8
FEMALES									
February 2002	2 216.1	1 854.8	4 070.9	180.0	277.9	4 348.8	7.5	6.4	55.0
February 2003	2 291.1	1 951.1	4 242.2	180.1	276.6	4 518.8	7.3	6.1	56.3
2004									
February	2 318.6	1 939.2	4 257.7	168.3	267.7	4 525.4	6.8	5.9	55.5
March	2 324.3	1 945.8	4 270.1	166.8	264.5	4 534.6	6.7	5.8	55.6
April	2 332.2	1 950.1	4 282.3	166.0	262.7	4 545.0	6.6	5.8	55.6
May	2 342.2	1 951.4	4 293.5	165.5	262.4	4 555.9	6.6	5.8	55.7
June	2 354.0	1 949.9	4 303.8	164.7	262.8	4 566.6	6.5	5.8	55.8
July	2 366.8	1 948.2	4 315.0	162.7	262.2	4 577.2	6.4	5.7	55.8
August	2 379.0	1 950.1	4 329.1	159.4	259.6	4 588.7	6.3	5.7	55.9
September	2 389.7	1 957.7	4 347.4	155.8	255.4	4 602.8	6.1	5.5	56.0
October	2 399.4	1 968.6	4 367.9	153.0	250.8	4 618.7	6.0	5.4	56.1
November	2 407.8	1 979.3	4 387.2	151.6	247.1	4 634.2	5.9	5.3	56.3
December	2 415.6	1 988.5	4 404.1	151.9	245.1	4 649.2	5.9	5.3	56.4
2005									
January	2 422.6	1 996.0	4 418.6	153.1	244.4	4 663.0	5.9	5.2	56.5
February	2 427.6	2 002.2	4 429.8	155.8	245.2	4 675.1	6.0	5.2	56.6
PERSONS									
February 2002	6 592.7	2 588.0	9 180.7	494.8	658.7	9 839.4	7.0	6.7	63.3
February 2003	6 735.4	2 721.0	9 456.4	467.5	627.4	10 083.8	6.5	6.2	63.9
2004									
February	6 867.6	2 728.1	9 595.7	423.5	580.7	10 176.5	5.8	5.7	63.5
March	6 883.1	2 733.4	9 616.6	422.8	577.9	10 194.5	5.8	5.7	63.6
April	6 898.6	2 736.3	9 634.9	422.3	576.1	10 211.0	5.8	5.6	63.6
May	6 913.0	2 737.4	9 650.4	421.0	575.6	10 226.0	5.7	5.6	63.6
June	6 926.5	2 737.9	9 664.4	418.3	575.3	10 239.7	5.7	5.6	63.6
July	6 939.3	2 740.3	9 679.6	413.4	573.8	10 253.4	5.6	5.6	63.5
August	6 951.7	2 748.0	9 699.7	406.4	569.2	10 268.9	5.5	5.5	63.5
September	6 966.0	2 761.9	9 727.9	398.5	561.4	10 289.3	5.4	5.5	63.6
October	6 983.7	2 778.7	9 762.3	391.0	551.5	10 313.9	5.3	5.3	63.7
November	7 002.6	2 794.4	9 797.0	385.2	542.1	10 339.1	5.2	5.2	63.8
December	7 022.2	2 807.0	9 829.2	381.5	534.7	10 363.9	5.2	5.2	63.9
2005									
January	7 041.2	2 816.7	9 857.9	379.1	529.4	10 387.3	5.1	5.1	64.0
February	7 057.5	2 823.8	9 881.3	379.0	526.2	10 407.5	5.1	5.1	64.1

LABOUR FORCE STATUS (AGED 15 YEARS & OVER): **Seasonally Adjusted**

	EMPLOYED			UNEMPLOYED		UNEMPLOYMENT RATE			Participation rate
	Full time	Part time	Total	Looking for f/t work	Total	Labour force	Looking for f/t work	Total	
	'000	'000	'000	'000	'000	'000	%	%	
MALES									
February 2002	4 371.8	745.4	5 117.2	319.2	382.4	5 499.6	6.8	7.0	72.1
February 2003	4 453.2	765.5	5 218.7	284.5	347.8	5 566.5	6.0	6.2	71.8
2004									
February	4 532.4	795.2	5 327.6	261.2	321.8	5 649.4	5.4	5.7	71.8
March	4 563.6	778.6	5 342.2	254.5	310.7	5 653.0	5.3	5.5	71.7
April	4 588.5	783.9	5 372.4	255.5	314.7	5 687.1	5.3	5.5	72.1
May	4 563.3	790.9	5 354.2	256.0	307.5	5 661.7	5.3	5.4	71.7
June	4 567.8	788.3	5 356.1	253.8	315.0	5 671.0	5.3	5.6	71.7
July	4 575.3	786.9	5 362.2	251.4	309.2	5 671.4	5.2	5.5	71.6
August	4 561.1	770.9	5 332.0	246.4	312.6	5 644.6	5.1	5.5	71.1
September	4 575.5	808.2	5 383.8	247.8	311.7	5 695.5	5.1	5.5	71.7
October	4 579.3	812.0	5 391.3	231.2	298.0	5 689.3	4.8	5.2	71.5
November	4 595.2	814.4	5 409.6	235.1	294.6	5 704.2	4.9	5.2	71.6
December	4 595.8	820.9	5 416.8	228.6	286.8	5 703.6	4.7	5.0	71.5
2005									
January	4 628.9	826.0	5 455.0	228.7	283.9	5 738.8	4.7	4.9	71.8
February	4 641.4	812.9	5 454.2	220.2	281.9	5 736.2	4.5	4.9	71.7
FEMALES									
February 2002	2 213.0	1 864.7	4 077.6	180.2	276.2	4 353.9	7.5	6.3	55.1
February 2003	2 309.1	1 952.4	4 261.5	175.3	270.2	4 531.7	7.1	6.0	56.5
2004									
February	2 302.2	1 935.0	4 237.2	170.9	273.2	4 510.4	6.9	6.1	55.3
March	2 325.3	1 963.3	4 288.6	164.8	260.8	4 549.4	6.6	5.7	55.8
April	2 351.9	1 965.8	4 317.7	168.2	262.3	4 579.9	6.7	5.7	56.1
May	2 331.8	1 962.2	4 294.0	160.6	255.6	4 549.7	6.4	5.6	55.6
June	2 367.4	1 926.3	4 293.8	158.9	257.9	4 551.7	6.3	5.7	55.6
July	2 358.3	1 948.1	4 306.5	178.1	274.7	4 581.2	7.0	6.0	55.9
August	2 381.1	1 946.7	4 327.8	158.6	265.9	4 593.7	6.2	5.8	55.9
September	2 387.5	1 955.3	4 342.8	152.3	253.4	4 596.3	6.0	5.5	55.9
October	2 403.2	1 977.1	4 380.2	152.5	245.9	4 626.1	6.0	5.3	56.2
November	2 415.7	1 970.3	4 385.9	144.4	242.6	4 628.6	5.6	5.2	56.2
December	2 410.9	1 996.0	4 406.9	151.1	242.1	4 649.0	5.9	5.2	56.4
2005									
January	2 412.8	2 001.9	4 414.7	157.0	248.0	4 662.7	6.1	5.3	56.5
February	2 438.2	1 997.2	4 435.4	161.0	251.1	4 686.5	6.2	5.4	56.8
PERSONS									
February 2002	6 584.8	2 610.1	9 194.8	499.4	658.6	9 853.4	7.0	6.7	63.4
February 2003	6 762.4	2 717.9	9 480.2	459.8	618.0	10 098.2	6.4	6.1	64.0
2004									
February	6 834.6	2 730.2	9 564.8	432.2	595.0	10 159.8	5.9	5.9	63.4
March	6 888.9	2 741.9	9 630.8	419.3	571.5	10 202.3	5.7	5.6	63.6
April	6 940.3	2 749.7	9 690.0	423.7	577.0	10 267.0	5.8	5.6	63.9
May	6 895.1	2 753.2	9 648.3	416.6	563.1	10 211.4	5.7	5.5	63.5
June	6 935.2	2 714.6	9 649.8	412.8	572.9	10 222.7	5.6	5.6	63.5
July	6 933.6	2 735.1	9 668.7	429.5	583.9	10 252.6	5.8	5.7	63.6
August	6 942.3	2 717.6	9 659.8	405.0	578.5	10 238.3	5.5	5.7	63.4
September	6 963.1	2 763.5	9 726.6	400.2	565.1	10 291.8	5.4	5.5	63.6
October	6 982.5	2 789.0	9 771.5	383.8	543.9	10 315.4	5.2	5.3	63.7
November	7 010.9	2 784.7	9 795.6	379.5	537.2	10 332.8	5.1	5.2	63.8
December	7 006.7	2 817.0	9 823.7	379.7	528.9	10 352.6	5.1	5.1	63.8
2005									
January	7 041.7	2 828.0	9 869.7	385.7	531.9	10 401.6	5.2	5.1	64.1
February	7 079.6	2 810.1	9 889.7	381.2	533.0	10 422.7	5.1	5.1	64.1

LABOUR FORCE STATUS (AGED 15 YEARS & OVER): **Original**

	EMPLOYED			UNEMPLOYED			UNEMPLOYMENT RATE			Participation rate	
	Full time	Part time	Total	Looking for f/t work	Total	Labour force	Not in labour force	Civilian population aged 15 years and over	Looking for f/t work		Total
	'000	'000	'000	'000	'000	'000	'000	'000	%		%
MALES											
February 2002	4 394.7	715.4	5 110.1	349.7	419.1	5 529.2	2 098.7	7 627.9	7.4	7.6	72.5
February 2003	4 479.5	734.1	5 213.6	312.0	381.5	5 595.0	2 152.5	7 747.6	6.5	6.8	72.2
2004											
February	4 562.9	760.7	5 323.6	286.5	353.1	5 676.7	2 194.7	7 871.4	5.9	6.2	72.1
March	4 558.2	783.0	5 341.1	256.8	319.5	5 660.6	2 221.1	7 881.8	5.3	5.6	71.8
April	4 543.7	798.9	5 342.6	257.0	320.6	5 663.3	2 228.2	7 891.5	5.4	5.7	71.8
May	4 544.2	801.7	5 345.9	255.5	308.8	5 654.6	2 246.7	7 901.3	5.3	5.5	71.6
June	4 533.0	817.3	5 350.2	252.5	309.6	5 659.8	2 251.2	7 911.0	5.3	5.5	71.5
July	4 571.6	795.3	5 366.9	236.7	287.3	5 654.3	2 269.3	7 923.6	4.9	5.1	71.4
August	4 507.5	780.7	5 288.2	235.2	298.6	5 586.7	2 349.6	7 936.3	5.0	5.3	70.4
September	4 603.8	804.0	5 407.8	247.6	315.8	5 723.6	2 225.3	7 948.9	5.1	5.5	72.0
October	4 582.3	827.3	5 409.6	219.3	280.5	5 690.1	2 269.1	7 959.1	4.6	4.9	71.5
November	4 588.2	806.1	5 394.3	223.9	274.9	5 669.2	2 300.4	7 969.6	4.7	4.8	71.1
December	4 675.8	815.0	5 490.8	225.1	284.7	5 775.5	2 204.4	7 979.9	4.6	4.9	72.4
2005											
January	4 630.0	784.6	5 414.6	256.5	314.0	5 728.6	2 259.2	7 987.8	5.2	5.5	71.7
February	4 674.7	776.7	5 451.4	241.7	309.8	5 761.2	2 234.6	7 995.8	4.9	5.4	72.1
FEMALES											
February 2002	2 228.4	1 827.8	4 056.2	204.1	317.1	4 373.3	3 533.1	7 906.3	8.4	7.3	55.3
February 2003	2 327.0	1 912.8	4 239.8	200.0	311.6	4 551.4	3 472.2	8 023.7	7.9	6.8	56.7
2004											
February	2 321.6	1 894.8	4 216.4	196.3	316.5	4 532.9	3 616.7	8 149.6	7.8	7.0	55.6
March	2 318.0	1 967.7	4 285.7	171.9	282.0	4 567.6	3 592.4	8 160.0	6.9	6.2	56.0
April	2 307.6	1 971.3	4 278.9	166.6	262.7	4 541.7	3 627.7	8 169.4	6.7	5.8	55.6
May	2 310.1	1 984.8	4 294.9	159.1	254.9	4 549.7	3 629.0	8 178.7	6.4	5.6	55.6
June	2 326.3	1 978.0	4 304.3	158.1	252.1	4 556.5	3 631.5	8 188.0	6.4	5.5	55.6
July	2 362.6	1 940.8	4 303.4	161.4	247.4	4 550.8	3 649.0	8 199.8	6.4	5.4	55.5
August	2 335.2	1 954.6	4 289.8	148.9	251.5	4 541.3	3 670.4	8 211.7	6.0	5.5	55.3
September	2 431.6	1 963.5	4 395.1	149.8	253.8	4 648.9	3 574.7	8 223.6	5.8	5.5	56.5
October	2 400.7	1 988.5	4 389.3	141.7	230.5	4 619.7	3 611.1	8 230.8	5.6	5.0	56.1
November	2 418.9	1 973.3	4 392.2	136.4	224.1	4 616.3	3 621.9	8 238.2	5.3	4.9	56.0
December	2 468.7	1 987.6	4 456.3	154.2	243.8	4 700.1	3 545.4	8 245.5	5.9	5.2	57.0
2005											
January	2 430.9	1 919.1	4 350.0	174.7	265.2	4 615.2	3 636.4	8 251.5	6.7	5.7	55.9
February	2 459.0	1 955.7	4 414.7	185.3	291.1	4 705.8	3 551.7	8 257.5	7.0	6.2	57.0
PERSONS											
February 2002	6 623.1	2 543.2	9 166.3	553.7	736.2	9 902.5	5 631.7	15 534.2	7.7	7.4	63.7
February 2003	6 806.5	2 646.9	9 453.4	512.0	693.1	10 146.5	5 624.7	15 771.2	7.0	6.8	64.3
2004											
February	6 884.5	2 655.5	9 540.0	482.9	669.6	10 209.6	5 811.4	16 020.9	6.6	6.6	63.7
March	6 876.1	2 750.7	9 626.8	428.7	601.5	10 228.3	5 813.6	16 041.8	5.9	5.9	63.8
April	6 851.4	2 770.2	9 621.6	423.6	583.4	10 204.9	5 855.9	16 060.8	5.8	5.7	63.5
May	6 854.2	2 786.5	9 640.7	414.6	563.6	10 204.3	5 875.7	16 080.0	5.7	5.5	63.5
June	6 859.3	2 795.3	9 654.6	410.7	561.7	10 216.3	5 882.7	16 099.0	5.6	5.5	63.5
July	6 934.2	2 736.2	9 670.4	398.0	534.7	10 205.1	5 918.3	16 123.4	5.4	5.2	63.3
August	6 842.7	2 735.3	9 578.0	384.1	550.1	10 128.1	6 020.0	16 148.0	5.3	5.4	62.7
September	7 035.4	2 767.5	9 802.9	397.3	569.6	10 372.5	5 800.0	16 172.4	5.3	5.5	64.1
October	6 983.0	2 815.8	9 798.8	361.0	511.0	10 309.8	5 880.2	16 190.0	4.9	5.0	63.7
November	7 007.1	2 779.4	9 786.5	360.3	499.0	10 285.5	5 922.3	16 207.8	4.9	4.9	63.5
December	7 144.5	2 802.6	9 947.1	379.3	528.6	10 475.6	5 749.7	16 225.4	5.0	5.0	64.6
2005											
January	7 060.9	2 703.7	9 764.6	431.2	579.2	10 343.7	5 895.6	16 239.3	5.8	5.6	63.7
February	7 133.7	2 732.3	9 866.0	427.0	600.9	10 467.0	5 786.3	16 253.3	5.6	5.7	64.4

LABOUR FORCE STATUS (AGED 15 YEARS & OVER)—New South Wales

	TREND					SEASONALLY ADJUSTED					Civilian population aged 15 years and over
	Employed full time	Total employed	Total unemployed	Unemployment rate	Participation rate	Employed full time	Total employed	Total unemployed	Unemployment rate	Participation rate	
	'000	'000	'000	%	%	'000	'000	'000	%	%	
MALES											
February 2002	1 479.5	1 713.3	118.0	6.4	70.8	1 484.4	1 719.9	117.0	6.4	71.0	2 587.2
February 2003	1 492.9	1 746.5	112.6	6.1	71.1	1 496.7	1 758.9	110.8	5.9	71.5	2 615.8
2004											
February	1 520.3	1 775.7	98.3	5.2	70.9	1 511.4	1 772.8	101.0	5.4	70.8	2 644.8
March	1 519.9	1 776.1	98.3	5.2	70.8	1 524.8	1 779.9	98.1	5.2	70.9	2 647.1
April	1 519.0	1 776.2	98.3	5.2	70.8	1 524.7	1 776.0	98.1	5.2	70.7	2 649.1
May	1 517.5	1 776.1	98.0	5.2	70.6	1 515.9	1 772.6	97.8	5.2	70.6	2 651.1
June	1 514.9	1 775.3	97.7	5.2	70.4	1 515.1	1 779.6	97.2	5.2	70.7	2 653.1
July	1 511.5	1 774.1	97.3	5.2	70.2	1 508.5	1 771.5	96.2	5.1	70.3	2 656.5
August	1 508.5	1 773.4	96.8	5.2	70.0	1 497.2	1 742.7	98.6	5.4	69.2	2 659.8
September	1 506.6	1 773.8	96.2	5.1	70.0	1 516.0	1 779.8	98.8	5.3	70.5	2 663.2
October	1 506.3	1 775.3	95.4	5.1	70.0	1 497.2	1 763.1	91.2	4.9	69.6	2 665.5
November	1 506.9	1 777.7	94.6	5.1	70.1	1 505.1	1 779.8	96.6	5.1	70.3	2 668.0
December	1 508.1	1 780.5	94.1	5.0	70.2	1 510.3	1 782.2	92.6	4.9	70.2	2 670.3
2005											
January	1 509.7	1 783.3	93.7	5.0	70.3	1 509.3	1 787.7	93.6	5.0	70.4	2 672.1
February	1 511.4	1 785.5	93.4	5.0	70.4	1 515.4	1 784.6	94.8	5.0	70.3	2 673.9
FEMALES											
February 2002	767.4	1 355.2	86.4	6.0	53.9	771.3	1 364.3	78.0	5.4	53.9	2 675.6
February 2003	784.5	1 403.8	91.0	6.1	55.3	795.0	1 406.2	93.1	6.2	55.4	2 704.2
2004											
February	799.8	1 409.8	83.5	5.6	54.6	796.1	1 404.4	79.5	5.4	54.3	2 733.5
March	798.2	1 413.4	84.0	5.6	54.7	801.2	1 419.7	80.6	5.4	54.8	2 736.1
April	796.2	1 415.2	85.3	5.7	54.8	800.9	1 427.6	86.6	5.7	55.3	2 738.1
May	795.6	1 415.2	86.7	5.8	54.8	786.5	1 414.7	88.8	5.9	54.9	2 740.1
June	797.1	1 413.8	87.2	5.8	54.7	795.7	1 407.6	86.3	5.8	54.5	2 742.1
July	800.8	1 412.1	86.4	5.8	54.6	797.4	1 409.3	91.4	6.1	54.7	2 745.2
August	805.2	1 411.9	84.5	5.6	54.5	806.0	1 408.1	87.6	5.9	54.4	2 748.3
September	809.0	1 414.2	82.3	5.5	54.4	817.0	1 419.3	72.6	4.9	54.2	2 751.4
October	811.4	1 418.4	80.8	5.4	54.5	814.8	1 418.6	83.6	5.6	54.6	2 752.9
November	812.3	1 423.0	80.2	5.3	54.6	809.6	1 420.0	78.7	5.3	54.4	2 754.4
December	812.7	1 427.4	80.4	5.3	54.7	810.3	1 426.0	80.8	5.4	54.7	2 755.8
2005											
January	813.2	1 431.3	80.8	5.3	54.8	808.0	1 435.8	81.4	5.4	55.0	2 757.0
February	813.4	1 434.8	81.7	5.4	55.0	819.7	1 435.7	83.4	5.5	55.1	2 758.3
PERSONS											
February 2002	2 246.9	3 068.5	204.4	6.2	62.2	2 255.6	3 084.2	194.9	5.9	62.3	5 262.9
February 2003	2 277.5	3 150.3	203.5	6.1	63.0	2 291.7	3 165.0	203.9	6.1	63.3	5 320.0
2004											
February	2 320.1	3 185.5	181.8	5.4	62.6	2 307.4	3 177.1	180.5	5.4	62.4	5 378.2
March	2 318.1	3 189.5	182.3	5.4	62.7	2 326.0	3 199.6	178.7	5.3	62.8	5 383.2
April	2 315.2	3 191.5	183.6	5.4	62.7	2 325.6	3 203.5	184.7	5.5	62.9	5 387.2
May	2 313.0	3 191.3	184.7	5.5	62.6	2 302.4	3 187.4	186.6	5.5	62.6	5 391.2
June	2 312.0	3 189.0	184.9	5.5	62.4	2 310.8	3 187.2	183.5	5.4	62.5	5 395.2
July	2 312.3	3 186.3	183.8	5.5	62.3	2 305.9	3 180.8	187.5	5.6	62.4	5 401.6
August	2 313.7	3 185.3	181.4	5.4	62.1	2 303.2	3 150.8	186.3	5.6	61.7	5 408.1
September	2 315.5	3 187.9	178.5	5.3	62.1	2 333.0	3 199.1	171.4	5.1	62.2	5 414.5
October	2 317.7	3 193.7	176.1	5.2	62.1	2 312.0	3 181.7	174.8	5.2	61.9	5 418.4
November	2 319.2	3 200.7	174.9	5.2	62.2	2 314.7	3 199.8	175.3	5.2	62.2	5 422.3
December	2 320.8	3 207.8	174.4	5.2	62.3	2 320.5	3 208.2	173.4	5.1	62.3	5 426.2
2005											
January	2 323.0	3 214.6	174.5	5.1	62.4	2 317.3	3 223.4	175.0	5.1	62.6	5 429.1
February	2 324.8	3 220.3	175.1	5.2	62.6	2 335.2	3 220.3	178.1	5.2	62.6	5 432.1

LABOUR FORCE STATUS (AGED 15 YEARS & OVER)—Victoria

	TREND					SEASONALLY ADJUSTED					Civilian population aged 15 years and over
	Employed full time	Total employed	Total unemployed	Unemployment rate	Participation rate	Employed full time	Total employed	Total unemployed	Unemployment rate	Participation rate	
	'000	'000	'000	%	%	'000	'000	'000	%	%	
MALES											
February 2002	1 099.3	1 278.4	86.6	6.3	72.3	1 092.4	1 275.3	88.4	6.5	72.2	1 887.8
February 2003	1 099.1	1 288.7	80.0	5.8	71.4	1 099.8	1 285.0	78.7	5.8	71.1	1 917.2
2004											
February	1 119.7	1 320.4	77.6	5.5	71.8	1 124.7	1 320.3	77.5	5.5	71.7	1 948.2
March	1 124.2	1 323.3	79.0	5.6	71.9	1 124.0	1 320.8	75.6	5.4	71.6	1 951.0
April	1 128.4	1 326.4	80.0	5.7	72.0	1 133.0	1 334.7	82.2	5.8	72.5	1 953.3
May	1 131.3	1 328.9	80.9	5.7	72.1	1 127.7	1 326.3	80.7	5.7	71.9	1 955.7
June	1 133.0	1 331.1	82.1	5.8	72.2	1 131.5	1 328.6	81.8	5.8	72.0	1 958.0
July	1 134.1	1 333.0	83.4	5.9	72.2	1 134.5	1 333.3	81.7	5.8	72.2	1 961.0
August	1 135.3	1 334.8	84.3	5.9	72.3	1 140.5	1 335.8	83.3	5.9	72.2	1 964.1
September	1 136.8	1 337.0	84.2	5.9	72.3	1 133.0	1 338.0	87.6	6.1	72.5	1 967.1
October	1 138.6	1 339.8	83.4	5.9	72.3	1 135.3	1 339.1	85.0	6.0	72.3	1 969.5
November	1 140.5	1 342.7	82.0	5.8	72.3	1 142.8	1 339.8	82.0	5.8	72.1	1 972.0
December	1 142.5	1 345.7	80.3	5.6	72.2	1 140.6	1 346.6	78.8	5.5	72.2	1 974.4
2005											
January	1 144.4	1 348.5	78.8	5.5	72.2	1 150.1	1 350.2	76.7	5.4	72.2	1 976.1
February	1 145.8	1 351.0	77.3	5.4	72.2	1 143.4	1 352.6	78.1	5.5	72.3	1 977.8
FEMALES											
February 2002	546.3	1 013.6	68.2	6.3	54.5	541.5	1 013.1	68.0	6.3	54.4	1 986.3
February 2003	572.3	1 072.1	61.8	5.5	56.3	578.3	1 085.2	51.6	4.5	56.4	2 015.5
2004											
February	576.3	1 062.4	64.2	5.7	55.1	576.9	1 063.0	67.5	6.0	55.2	2 046.4
March	580.4	1 065.5	62.9	5.6	55.1	575.4	1 067.7	62.9	5.6	55.2	2 049.2
April	584.3	1 067.9	62.3	5.5	55.1	579.4	1 072.7	65.6	5.8	55.5	2 051.5
May	586.9	1 069.5	62.9	5.6	55.1	590.8	1 066.5	55.5	4.9	54.6	2 053.8
June	587.8	1 071.1	64.4	5.7	55.2	600.3	1 068.9	62.0	5.5	55.0	2 056.1
July	587.0	1 073.7	66.4	5.8	55.4	581.1	1 075.5	67.7	5.9	55.5	2 059.1
August	585.4	1 078.2	68.3	6.0	55.6	587.0	1 076.3	74.3	6.5	55.8	2 062.1
September	584.2	1 084.7	69.4	6.0	55.9	578.0	1 080.7	69.6	6.1	55.7	2 065.1
October	584.3	1 092.1	69.3	6.0	56.2	579.5	1 092.9	68.3	5.9	56.2	2 066.8
November	586.2	1 099.4	68.3	5.8	56.5	591.2	1 101.8	67.2	5.8	56.5	2 068.5
December	588.8	1 105.9	67.2	5.7	56.7	590.5	1 109.1	67.5	5.7	56.8	2 070.1
2005											
January	591.4	1 111.3	66.2	5.6	56.8	589.4	1 112.1	66.0	5.6	56.9	2 071.5
February	593.3	1 115.7	65.3	5.5	57.0	595.7	1 113.6	65.4	5.5	56.9	2 072.8
PERSONS											
February 2002	1 645.6	2 292.0	154.8	6.3	63.2	1 634.0	2 288.4	156.4	6.4	63.1	3 874.1
February 2003	1 671.4	2 360.7	141.8	5.7	63.6	1 678.0	2 370.2	130.3	5.2	63.6	3 932.6
2004											
February	1 696.0	2 382.8	141.8	5.6	63.2	1 701.6	2 383.2	144.9	5.7	63.3	3 994.6
March	1 704.5	2 388.9	141.9	5.6	63.3	1 699.4	2 388.4	138.5	5.5	63.2	4 000.2
April	1 712.6	2 394.3	142.3	5.6	63.3	1 712.4	2 407.3	147.8	5.8	63.8	4 004.8
May	1 718.2	2 398.4	143.8	5.7	63.4	1 718.4	2 392.8	136.2	5.4	63.1	4 009.5
June	1 720.8	2 402.2	146.4	5.7	63.5	1 731.8	2 397.5	143.8	5.7	63.3	4 014.2
July	1 721.1	2 406.7	149.8	5.9	63.6	1 715.5	2 408.8	149.4	5.8	63.6	4 020.2
August	1 720.7	2 413.0	152.6	5.9	63.7	1 727.5	2 412.1	157.6	6.1	63.8	4 026.2
September	1 720.9	2 421.7	153.7	6.0	63.9	1 711.0	2 418.8	157.2	6.1	63.9	4 032.2
October	1 722.9	2 431.9	152.7	5.9	64.0	1 714.8	2 432.0	153.2	5.9	64.0	4 036.3
November	1 726.7	2 442.1	150.3	5.8	64.2	1 734.0	2 441.6	149.2	5.8	64.1	4 040.4
December	1 731.3	2 451.6	147.5	5.7	64.3	1 731.1	2 455.7	146.3	5.6	64.3	4 044.5
2005											
January	1 735.8	2 459.8	145.0	5.6	64.4	1 739.5	2 462.3	142.8	5.5	64.4	4 047.5
February	1 739.1	2 466.6	142.6	5.5	64.4	1 739.1	2 466.2	143.5	5.5	64.4	4 050.6

LABOUR FORCE STATUS (AGED 15 YEARS & OVER)—Queensland

	TREND					SEASONALLY ADJUSTED					Civilian population aged 15 years and over '000
	Employed full time	Total employed	Total unemp-loyed	Unemp-loyment rate	Partici-pation rate	Employed full time	Total employed	Total unemp-loyed	Unemp-loyment rate	Partici-pation rate	
	'000	'000	'000	%	%	'000	'000	'000	%	%	
MALES											
February 2002	814.8	957.5	85.2	8.2	73.2	815.9	959.9	86.2	8.2	73.4	1 425.1
February 2003	839.5	992.2	72.7	6.8	72.7	841.5	990.4	70.1	6.6	72.4	1 464.1
2004											
February	884.9	1 028.3	63.1	5.8	72.6	881.3	1 027.1	69.2	6.3	73.0	1 502.6
March	888.0	1 032.1	63.1	5.8	72.7	885.4	1 026.3	64.0	5.9	72.4	1 505.9
April	890.4	1 035.6	63.0	5.7	72.8	892.5	1 044.2	61.5	5.6	73.3	1 509.0
May	892.9	1 039.2	62.3	5.7	72.8	893.4	1 041.7	58.5	5.3	72.7	1 512.3
June	896.5	1 043.4	60.9	5.5	72.9	893.3	1 038.2	62.6	5.7	72.6	1 515.5
July	900.5	1 047.9	59.3	5.4	72.9	903.5	1 044.8	62.4	5.6	72.9	1 519.0
August	904.0	1 052.5	57.5	5.2	72.9	899.8	1 050.2	57.6	5.2	72.8	1 522.7
September	906.7	1 057.2	55.7	5.0	72.9	907.3	1 062.8	54.9	4.9	73.2	1 526.3
October	909.2	1 061.9	53.7	4.8	72.9	916.5	1 066.2	50.7	4.5	73.0	1 529.7
November	911.3	1 065.9	51.8	4.6	72.9	913.0	1 063.1	52.4	4.7	72.8	1 533.3
December	913.5	1 069.4	50.1	4.5	72.9	902.0	1 064.7	51.6	4.6	72.6	1 536.7
2005											
January	915.7	1 072.4	48.5	4.3	72.8	916.6	1 074.9	50.8	4.5	73.1	1 539.5
February	918.1	1 074.8	47.3	4.2	72.8	924.7	1 077.0	43.6	3.9	72.7	1 542.3
FEMALES											
February 2002	422.0	772.3	62.7	7.5	56.9	423.8	774.2	64.4	7.7	57.2	1 466.9
February 2003	430.7	807.4	65.8	7.5	58.0	430.5	814.8	66.5	7.5	58.6	1 505.0
2004											
February	444.6	824.9	59.2	6.7	57.2	440.3	820.1	59.1	6.7	56.9	1 545.2
March	445.7	826.2	58.5	6.6	57.1	443.9	825.1	59.4	6.7	57.1	1 548.4
April	448.3	829.0	57.1	6.4	57.1	451.0	829.1	56.9	6.4	57.1	1 551.4
May	452.3	833.5	55.6	6.3	57.2	449.1	832.9	54.3	6.1	57.1	1 554.4
June	458.3	839.3	54.3	6.1	57.4	456.7	844.3	54.6	6.1	57.7	1 557.4
July	465.8	846.0	53.0	5.9	57.6	467.7	843.2	52.6	5.9	57.4	1 560.7
August	473.5	852.9	51.8	5.7	57.8	471.9	850.2	51.9	5.7	57.7	1 564.0
September	480.2	859.6	50.5	5.6	58.1	482.1	857.1	52.4	5.8	58.0	1 567.3
October	485.3	865.8	49.4	5.4	58.3	484.9	873.9	40.8	4.5	58.3	1 570.0
November	488.7	871.3	48.5	5.3	58.5	496.1	871.3	47.1	5.1	58.4	1 572.8
December	491.0	876.0	47.8	5.2	58.6	489.7	873.3	46.0	5.0	58.4	1 575.5
2005											
January	492.4	879.9	47.4	5.1	58.8	488.0	880.7	49.2	5.3	58.9	1 577.8
February	493.2	882.7	47.2	5.1	58.9	492.7	882.6	47.9	5.1	58.9	1 580.2
PERSONS											
February 2002	1 236.8	1 729.8	147.9	7.9	64.9	1 239.7	1 734.1	150.6	8.0	65.2	2 892.1
February 2003	1 270.2	1 799.6	138.4	7.1	65.3	1 272.0	1 805.3	136.6	7.0	65.4	2 969.1
2004											
February	1 329.5	1 853.1	122.3	6.2	64.8	1 321.6	1 847.2	128.2	6.5	64.8	3 047.9
March	1 333.8	1 858.3	121.6	6.1	64.8	1 329.4	1 851.4	123.4	6.3	64.7	3 054.3
April	1 338.7	1 864.6	120.1	6.1	64.9	1 343.5	1 873.3	118.4	5.9	65.1	3 060.4
May	1 345.2	1 872.7	117.9	5.9	64.9	1 342.5	1 874.5	112.9	5.7	64.8	3 066.7
June	1 354.8	1 882.7	115.2	5.8	65.0	1 350.0	1 882.5	117.1	5.9	65.1	3 072.9
July	1 366.3	1 893.9	112.3	5.6	65.1	1 371.3	1 887.9	115.0	5.7	65.0	3 079.7
August	1 377.5	1 905.4	109.3	5.4	65.3	1 371.7	1 900.4	109.4	5.4	65.1	3 086.8
September	1 386.9	1 916.8	106.2	5.3	65.4	1 389.4	1 919.9	107.3	5.3	65.5	3 093.6
October	1 394.5	1 927.6	103.1	5.1	65.5	1 401.4	1 940.2	91.5	4.5	65.5	3 099.7
November	1 400.1	1 937.2	100.2	4.9	65.6	1 409.1	1 934.4	99.5	4.9	65.5	3 106.1
December	1 404.5	1 945.4	97.9	4.8	65.7	1 391.7	1 938.0	97.6	4.8	65.4	3 112.2
2005											
January	1 408.1	1 952.3	95.9	4.7	65.7	1 404.7	1 955.6	100.0	4.9	65.9	3 117.4
February	1 411.3	1 957.4	94.5	4.6	65.7	1 417.4	1 959.7	91.5	4.5	65.7	3 122.5

	TREND					SEASONALLY ADJUSTED					Civilian population aged 15 years and over
	Employed full time	Total employed	Total unemp-loyed	Unemp-loyment rate	Partici-pation rate	Employed full time	Total employed	Total unemp-loyed	Unemp-loyment rate	Partici-pation rate	
	'000	'000	'000	%	%	'000	'000	'000	%	%	
MALES											
February 2002	321.9	383.3	31.3	7.5	69.2	319.7	383.9	31.7	7.6	69.4	599.2
February 2003	336.0	390.7	28.1	6.7	69.3	338.4	390.8	28.7	6.8	69.4	604.5
2004											
February	334.9	396.6	28.3	6.7	69.6	331.3	394.5	27.9	6.6	69.2	610.2
March	335.4	397.1	28.2	6.6	69.6	340.6	397.8	27.6	6.5	69.6	610.7
April	335.6	397.5	28.1	6.6	69.6	335.2	397.0	28.7	6.7	69.6	611.2
May	335.3	398.0	28.2	6.6	69.7	334.5	397.2	27.9	6.6	69.5	611.7
June	334.8	398.6	28.2	6.6	69.7	336.0	400.6	28.2	6.6	70.0	612.2
July	334.4	399.4	27.8	6.5	69.7	333.4	399.6	27.6	6.5	69.7	612.7
August	334.3	400.0	27.1	6.3	69.7	333.6	398.7	27.8	6.5	69.5	613.2
September	334.7	400.6	26.2	6.1	69.5	333.4	398.9	27.3	6.4	69.4	613.7
October	335.5	401.0	25.3	5.9	69.4	337.1	403.0	25.6	6.0	69.8	614.1
November	336.5	401.3	24.7	5.8	69.3	337.1	402.6	21.9	5.2	69.1	614.4
December	337.4	401.5	24.3	5.7	69.3	337.5	402.3	23.1	5.4	69.2	614.8
2005											
January	338.4	401.5	24.2	5.7	69.2	335.8	397.9	26.7	6.3	69.0	615.1
February	339.2	401.6	24.2	5.7	69.2	341.7	402.9	24.5	5.7	69.4	615.4
FEMALES											
February 2002	152.0	307.9	20.9	6.3	52.6	151.7	307.5	21.3	6.5	52.6	624.7
February 2003	165.0	320.5	18.8	5.5	53.9	167.8	320.9	18.8	5.5	54.0	629.4
2004											
February	154.4	319.5	21.5	6.3	53.8	152.2	318.4	24.0	7.0	54.0	634.4
March	155.2	319.9	20.7	6.1	53.7	156.2	322.2	18.4	5.4	53.7	634.7
April	156.6	320.3	20.1	5.9	53.6	158.8	321.5	18.5	5.4	53.5	635.2
May	158.1	320.6	19.8	5.8	53.6	155.6	320.0	19.5	5.8	53.4	635.6
June	159.6	320.8	19.8	5.8	53.5	161.6	318.9	20.8	6.1	53.4	636.0
July	160.7	321.0	19.7	5.8	53.5	160.7	321.0	20.9	6.1	53.7	636.4
August	161.6	321.4	19.5	5.7	53.5	162.1	323.4	19.3	5.6	53.8	636.9
September	162.6	322.3	19.0	5.6	53.6	161.0	322.4	18.4	5.4	53.5	637.3
October	163.6	323.7	18.2	5.3	53.6	163.8	322.0	18.9	5.6	53.5	637.5
November	164.5	325.4	17.6	5.1	53.8	165.4	323.8	16.9	5.0	53.4	637.7
December	165.5	327.3	17.2	5.0	54.0	164.1	328.1	16.8	4.9	54.1	638.0
2005											
January	166.3	329.1	16.9	4.9	54.2	168.7	330.2	17.4	5.0	54.5	638.1
February	166.9	330.8	16.7	4.8	54.4	165.7	332.3	16.8	4.8	54.7	638.2
PERSONS											
February 2002	473.9	691.1	52.1	7.0	60.7	471.4	691.4	53.0	7.1	60.8	1 223.9
February 2003	501.0	711.2	46.8	6.2	61.4	506.2	711.7	47.5	6.3	61.5	1 233.9
2004											
February	489.4	716.2	49.7	6.5	61.5	483.5	712.9	51.9	6.8	61.5	1 244.6
March	490.6	717.0	48.9	6.4	61.5	496.8	720.0	46.0	6.0	61.5	1 245.4
April	492.1	717.8	48.2	6.3	61.5	494.0	718.5	47.2	6.2	61.4	1 246.3
May	493.4	718.6	48.0	6.3	61.5	490.1	717.3	47.4	6.2	61.3	1 247.3
June	494.4	719.4	47.9	6.2	61.5	497.6	719.5	48.9	6.4	61.6	1 248.2
July	495.1	720.3	47.6	6.2	61.5	494.2	720.6	48.6	6.3	61.6	1 249.1
August	495.9	721.4	46.6	6.1	61.4	495.7	722.0	47.1	6.1	61.5	1 250.0
September	497.3	722.9	45.1	5.9	61.4	494.4	721.3	45.6	6.0	61.3	1 251.0
October	499.1	724.7	43.5	5.7	61.4	500.9	725.1	44.5	5.8	61.5	1 251.6
November	501.0	726.7	42.3	5.5	61.4	502.4	726.4	38.8	5.1	61.1	1 252.2
December	502.9	728.7	41.5	5.4	61.5	501.6	730.4	39.9	5.2	61.5	1 252.8
2005											
January	504.7	730.7	41.0	5.3	61.6	504.5	728.1	44.1	5.7	61.6	1 253.2
February	506.1	732.4	40.9	5.3	61.7	507.4	735.1	41.3	5.3	61.9	1 253.7

	TREND					SEASONALLY ADJUSTED					Civilian population aged 15 years and over
	Employed full time	Total employed	Total unemployed	Unemployment rate	Participation rate	Employed full time	Total employed	Total unemployed	Unemployment rate	Participation rate	
	'000	'000	'000	%	%	'000	'000	'000	%	%	
MALES											
February 2002	448.9	523.4	38.7	6.9	74.8	449.1	523.7	38.8	6.9	74.9	751.4
February 2003	458.1	537.3	36.3	6.3	75.0	459.7	537.4	36.0	6.3	75.0	764.8
2004											
February	469.7	553.0	30.0	5.1	74.7	465.7	550.4	29.2	5.0	74.3	780.5
March	469.9	553.5	29.2	5.0	74.5	468.1	550.7	30.2	5.2	74.3	781.7
April	470.3	553.1	28.6	4.9	74.3	476.2	556.8	27.9	4.8	74.7	783.1
May	470.6	552.0	27.9	4.8	73.9	470.9	557.4	28.4	4.8	74.7	784.4
June	470.7	551.2	27.3	4.7	73.6	469.9	548.8	27.3	4.7	73.3	785.8
July	470.6	551.0	26.6	4.6	73.3	471.0	548.2	26.3	4.6	73.0	787.5
August	471.1	551.9	26.1	4.5	73.2	470.1	549.0	26.8	4.7	73.0	789.1
September	472.9	554.5	25.6	4.4	73.4	470.0	553.6	24.1	4.2	73.0	790.8
October	476.3	558.6	25.3	4.3	73.7	477.3	560.4	27.0	4.6	74.2	792.0
November	480.4	563.0	25.0	4.2	74.1	480.4	565.3	23.8	4.0	74.3	793.2
December	484.6	566.9	24.8	4.2	74.5	482.5	564.8	25.4	4.3	74.3	794.4
2005											
January	488.5	570.3	24.6	4.1	74.8	493.4	572.3	24.0	4.0	75.0	795.2
February	491.9	573.0	24.5	4.1	75.1	492.0	573.0	24.9	4.2	75.1	796.1
FEMALES											
February 2002	203.8	410.0	25.7	5.9	57.2	203.4	411.8	26.1	6.0	57.4	762.2
February 2003	211.3	422.9	24.7	5.5	57.7	211.2	421.9	23.1	5.2	57.4	775.8
2004											
February	216.7	425.1	27.7	6.1	57.2	210.7	418.5	28.5	6.4	56.4	792.1
March	218.1	428.3	26.8	5.9	57.4	216.0	427.8	26.7	5.9	57.3	793.3
April	220.0	430.7	26.0	5.7	57.5	222.6	433.7	25.1	5.5	57.7	794.7
May	221.9	432.4	25.5	5.6	57.5	225.0	439.5	24.7	5.3	58.3	796.1
June	223.2	433.3	25.2	5.5	57.5	226.0	431.5	26.2	5.7	57.4	797.4
July	223.9	433.9	24.8	5.4	57.4	221.1	430.3	25.7	5.6	57.1	799.0
August	224.1	434.6	24.3	5.3	57.3	220.9	431.5	22.6	5.0	56.7	800.6
September	224.5	436.0	23.8	5.2	57.3	225.6	435.2	25.8	5.6	57.5	802.3
October	225.5	438.3	23.5	5.1	57.5	226.7	442.8	22.7	4.9	58.0	803.1
November	227.1	440.8	23.3	5.0	57.7	228.3	441.8	22.4	4.8	57.7	804.0
December	228.7	443.0	23.3	5.0	57.9	225.1	440.2	22.2	4.8	57.5	804.9
2005											
January	230.2	444.9	23.5	5.0	58.1	230.9	444.0	25.0	5.3	58.2	805.6
February	231.6	446.4	23.8	5.1	58.3	233.8	448.5	24.1	5.1	58.6	806.3
PERSONS											
February 2002	652.8	933.4	64.5	6.5	65.9	652.5	935.5	64.9	6.5	66.1	1 513.6
February 2003	669.4	960.2	61.0	6.0	66.3	670.9	959.3	59.1	5.8	66.1	1 540.5
2004											
February	686.4	978.1	57.7	5.6	65.9	676.4	969.0	57.7	5.6	65.3	1 572.5
March	688.0	981.8	56.0	5.4	65.9	684.1	978.5	56.9	5.5	65.7	1 575.0
April	690.4	983.8	54.6	5.3	65.8	698.8	990.5	53.0	5.1	66.1	1 577.7
May	692.4	984.4	53.4	5.1	65.7	695.9	996.9	53.1	5.1	66.4	1 580.5
June	693.9	984.4	52.5	5.1	65.5	695.9	980.4	53.5	5.2	65.3	1 583.2
July	694.5	984.8	51.5	5.0	65.3	692.1	978.5	52.0	5.0	65.0	1 586.5
August	695.2	986.5	50.4	4.9	65.2	691.0	980.5	49.4	4.8	64.8	1 589.8
September	697.4	990.5	49.5	4.8	65.3	695.6	988.8	49.9	4.8	65.2	1 593.1
October	701.9	996.8	48.7	4.7	65.6	703.9	1 003.2	49.7	4.7	66.0	1 595.1
November	707.5	1 003.8	48.3	4.6	65.9	708.7	1 007.1	46.2	4.4	65.9	1 597.2
December	713.3	1 009.9	48.1	4.5	66.2	707.6	1 005.0	47.6	4.5	65.8	1 599.2
2005											
January	718.7	1 015.2	48.1	4.5	66.4	724.3	1 016.3	49.0	4.6	66.5	1 600.9
February	723.5	1 019.3	48.3	4.5	66.6	725.8	1 021.5	49.0	4.6	66.8	1 602.5

LABOUR FORCE STATUS (AGED 15 YEARS & OVER)—Tasmania

	TREND					SEASONALLY ADJUSTED					Civilian population aged 15 years and over
	Employed full time	Total employed	Total unemployed	Unemployment rate	Participation rate	Employed full time	Total employed	Total unemployed	Unemployment rate	Participation rate	
	'000	'000	'000	%	%	'000	'000	'000	%	%	
MALES											
February 2002	93.6	109.8	11.6	9.5	66.5	93.9	110.4	10.6	8.8	66.4	182.4
February 2003	95.4	111.2	12.3	10.0	67.0	94.8	109.9	12.8	10.4	66.5	184.4
2004											
February	99.1	116.1	9.3	7.4	67.0	98.9	115.8	9.1	7.3	66.8	187.1
March	99.8	116.7	9.2	7.3	67.2	99.4	117.6	9.6	7.5	67.9	187.4
April	100.4	117.2	9.3	7.3	67.4	100.1	117.4	9.3	7.4	67.5	187.6
May	100.8	117.5	9.4	7.4	67.5	100.7	117.1	8.4	6.7	66.8	187.8
June	101.0	117.6	9.4	7.4	67.6	101.6	117.5	10.2	8.0	67.9	188.1
July	100.9	117.6	9.4	7.4	67.5	102.3	117.8	9.6	7.5	67.7	188.3
August	100.6	117.6	9.1	7.2	67.3	99.8	117.3	9.3	7.4	67.2	188.5
September	100.0	117.5	8.7	6.9	66.9	99.2	117.6	8.7	6.9	66.9	188.7
October	99.4	117.4	8.2	6.6	66.5	100.2	118.0	8.2	6.5	66.8	188.9
November	98.9	117.3	7.7	6.2	66.1	97.9	117.5	7.6	6.1	66.2	189.2
December	98.7	117.1	7.3	5.9	65.7	99.2	116.2	7.3	5.9	65.2	189.4
2005											
January	98.5	117.1	7.0	5.6	65.4	97.9	116.5	6.6	5.4	64.9	189.6
February	98.5	117.1	6.7	5.4	65.2	99.1	118.1	7.0	5.6	65.9	189.8
FEMALES											
February 2002	43.5	88.3	6.9	7.2	49.7	43.0	88.5	8.2	8.4	50.4	191.7
February 2003	44.7	91.1	7.9	8.0	51.2	45.6	91.0	7.8	7.9	51.0	193.6
2004											
February	46.0	95.0	6.3	6.2	51.6	44.7	94.4	6.7	6.6	51.4	196.4
March	46.0	95.0	6.2	6.2	51.5	45.9	95.8	6.1	6.0	51.8	196.7
April	46.4	95.1	6.1	6.1	51.4	46.5	95.1	5.9	5.8	51.3	196.9
May	46.9	95.4	6.0	6.0	51.5	45.7	94.2	6.5	6.5	51.1	197.1
June	47.4	95.7	6.0	5.9	51.5	48.7	95.8	5.8	5.7	51.5	197.3
July	47.7	96.1	5.9	5.8	51.6	49.1	97.0	6.2	6.0	52.2	197.6
August	47.7	96.4	5.9	5.8	51.7	47.1	96.7	5.2	5.1	51.5	197.8
September	47.6	96.8	5.9	5.8	51.9	46.7	96.6	6.2	6.0	51.9	198.0
October	47.5	97.2	5.9	5.7	52.0	47.5	96.5	6.2	6.1	51.8	198.2
November	47.7	97.6	5.9	5.7	52.2	47.7	97.8	6.0	5.8	52.3	198.4
December	47.9	98.2	5.8	5.6	52.4	47.5	97.6	5.4	5.2	51.9	198.6
2005											
January	48.2	98.8	5.8	5.5	52.6	49.1	99.2	6.0	5.7	52.9	198.7
February	48.6	99.4	5.8	5.5	52.9	48.6	100.1	5.6	5.3	53.2	198.9
PERSONS											
February 2002	137.1	198.1	18.5	8.5	57.9	136.9	199.0	18.8	8.6	58.2	374.2
February 2003	140.0	202.4	20.2	9.1	58.9	140.4	200.8	20.6	9.3	58.6	378.0
2004											
February	145.2	211.1	15.6	6.9	59.1	143.6	210.2	15.8	7.0	58.9	383.5
March	145.8	211.7	15.5	6.8	59.2	145.3	213.3	15.6	6.8	59.6	384.0
April	146.8	212.3	15.4	6.8	59.2	146.6	212.5	15.2	6.7	59.2	384.5
May	147.7	212.9	15.4	6.8	59.3	146.4	211.3	14.9	6.6	58.8	384.9
June	148.4	213.3	15.4	6.7	59.4	150.3	213.3	15.9	7.0	59.5	385.4
July	148.6	213.8	15.3	6.7	59.4	151.4	214.8	15.8	6.8	59.8	385.8
August	148.2	214.1	15.1	6.6	59.3	146.9	214.0	14.5	6.3	59.2	386.3
September	147.5	214.3	14.7	6.4	59.2	145.8	214.3	14.9	6.5	59.3	386.7
October	146.9	214.6	14.1	6.2	59.1	147.7	214.5	14.4	6.3	59.1	387.2
November	146.6	214.9	13.6	6.0	59.0	145.7	215.3	13.6	6.0	59.1	387.6
December	146.6	215.3	13.1	5.8	58.9	146.7	213.9	12.7	5.6	58.4	388.1
2005											
January	146.8	215.9	12.7	5.6	58.9	147.0	215.7	12.6	5.5	58.8	388.3
February	147.2	216.5	12.5	5.4	58.9	147.7	218.2	12.6	5.5	59.4	388.6

	TREND					Civilian population aged 15 years and over
	Employed full time	Total employed	Total unemployed	Unemployment rate	Participation rate	
	'000	'000	'000	%	%	
MALES						
February 2002	43.5	54.0	4.5	7.6	79.8	73.4
February 2003	45.2	54.7	3.7	6.4	79.1	73.9
2004						
February	43.9	53.7	2.5	4.4	76.2	73.7
March	43.9	53.3	2.6	4.6	75.8	73.7
April	43.8	52.7	2.9	5.2	75.4	73.8
May	43.5	52.1	3.3	6.0	75.0	73.9
June	43.1	51.4	3.8	6.9	74.7	73.9
July	42.8	50.8	4.2	7.6	74.3	74.1
August	42.6	50.5	4.4	8.0	74.0	74.2
September	42.6	50.4	4.4	8.1	73.7	74.3
October	42.9	50.5	4.3	7.8	73.6	74.5
November	43.3	50.8	4.1	7.5	73.7	74.6
December	43.8	51.2	4.0	7.3	73.9	74.7
2005						
January	44.3	51.6	3.9	7.1	74.2	74.9
February	44.8	52.0	3.9	7.0	74.5	75.2
FEMALES						
February 2002	28.5	44.5	2.8	6.0	68.4	69.1
February 2003	29.1	44.0	3.0	6.4	67.8	69.3
2004						
February	29.2	44.0	2.3	4.9	66.6	69.5
March	29.5	44.2	2.3	5.0	66.9	69.6
April	29.6	44.2	2.4	5.2	67.0	69.6
May	29.6	44.2	2.6	5.5	67.1	69.7
June	29.5	44.0	2.7	5.8	67.0	69.8
July	29.2	43.9	2.9	6.1	66.9	69.8
August	29.0	43.7	2.9	6.3	66.7	69.9
September	29.0	43.6	2.9	6.2	66.5	70.0
October	29.1	43.6	2.8	5.9	66.2	70.0
November	29.4	43.7	2.6	5.6	66.0	70.1
December	29.6	43.8	2.5	5.4	65.9	70.2
2005						
January	29.8	43.8	2.4	5.1	65.8	70.2
February	30.0	43.9	2.3	5.0	65.8	70.3
PERSONS						
February 2002	72.0	98.5	7.3	6.9	74.3	142.5
February 2003	74.3	98.7	6.7	6.4	73.6	143.2
2004						
February	73.1	97.7	4.7	4.6	71.5	143.2
March	73.4	97.5	4.9	4.8	71.4	143.3
April	73.4	97.0	5.3	5.2	71.3	143.4
May	73.1	96.3	5.9	5.8	71.2	143.6
June	72.6	95.4	6.5	6.4	71.0	143.7
July	72.0	94.7	7.1	6.9	70.7	143.9
August	71.6	94.2	7.4	7.2	70.5	144.1
September	71.6	94.0	7.3	7.2	70.2	144.3
October	72.1	94.1	7.1	7.0	70.0	144.5
November	72.7	94.5	6.7	6.7	70.0	144.7
December	73.5	95.0	6.5	6.4	70.0	144.8
2005						
January	74.2	95.4	6.3	6.2	70.1	145.2
February	74.7	95.9	6.2	6.1	70.3	145.5

	TREND					<i>Civilian population aged 15 years and over</i>
	<i>Employed full time</i>	<i>Total employed</i>	<i>Total unemployed</i>	<i>Unemployment rate</i>	<i>Participation rate</i>	
	'000	'000	'000	%	%	
MALES						
February 2002	74.5	88.2	4.7	5.0	76.5	121.3
February 2003	77.2	90.9	4.8	5.0	77.9	122.9
2004						
February	75.8	92.6	3.9	4.1	77.7	124.2
March	76.1	92.7	3.8	4.0	77.8	124.3
April	76.5	92.8	3.7	3.9	77.6	124.3
May	76.8	92.6	3.7	3.8	77.3	124.4
June	77.0	92.3	3.7	3.8	76.7	124.4
July	77.2	91.7	3.8	4.0	76.2	124.5
August	77.5	91.2	4.0	4.2	75.9	124.7
September	78.0	91.1	4.3	4.5	75.9	124.8
October	78.5	91.4	4.4	4.6	76.4	124.9
November	79.1	92.0	4.5	4.6	77.0	125.0
December	79.7	92.8	4.4	4.5	77.7	125.1
2005						
January	80.3	93.6	4.3	4.4	78.3	125.2
February	80.7	94.4	4.2	4.3	78.9	125.3
FEMALES						
February 2002	51.9	82.8	3.2	3.7	66.3	129.7
February 2003	53.1	84.8	3.2	3.6	67.2	130.9
2004						
February	53.3	84.6	3.0	3.4	66.3	132.1
March	53.2	84.6	3.0	3.4	66.3	132.1
April	53.0	84.5	2.9	3.4	66.2	132.0
May	52.8	84.4	3.0	3.4	66.2	132.0
June	52.6	84.3	3.0	3.4	66.2	131.9
July	52.5	84.3	3.1	3.5	66.2	132.0
August	52.4	84.4	3.1	3.5	66.3	132.1
September	52.4	84.9	3.0	3.4	66.5	132.2
October	52.5	85.7	2.9	3.3	67.0	132.3
November	52.7	86.5	2.8	3.1	67.5	132.3
December	53.1	87.3	2.7	3.0	68.0	132.4
2005						
January	53.6	88.0	2.6	2.8	68.4	132.5
February	54.0	88.6	2.5	2.7	68.7	132.5
PERSONS						
February 2002	126.4	171.0	7.8	4.4	71.2	251.1
February 2003	130.4	175.7	8.0	4.3	72.4	253.8
2004						
February	129.1	177.2	6.9	3.8	71.9	256.3
March	129.3	177.3	6.8	3.7	71.9	256.4
April	129.5	177.3	6.7	3.6	71.8	256.4
May	129.6	177.1	6.6	3.6	71.6	256.4
June	129.6	176.6	6.7	3.6	71.3	256.3
July	129.7	176.0	6.9	3.8	71.0	256.6
August	130.0	175.7	7.1	3.9	70.9	256.8
September	130.4	176.0	7.3	4.0	71.1	257.0
October	131.1	177.0	7.4	4.0	71.5	257.1
November	131.9	178.5	7.3	3.9	72.1	257.4
December	132.8	180.1	7.1	3.8	72.7	257.5
2005						
January	133.8	181.7	6.9	3.7	73.2	257.7
February	134.7	183.0	6.7	3.5	73.7	257.8

	EMPLOYED			UNEMPLOYED		Labour force	Not in labour force	Civilian population aged 15 years and over	UNEMPLOYMENT RATE		Participation rate
	Full time	Part time	Total	Looking for f/t work	Total				Looking for f/t work	Total	
	'000	'000	'000	'000	'000				'000	'000	
MALES											
New South Wales	1 522.6	254.4	1 777.0	83.6	106.6	1 883.6	790.3	2 673.9	5.2	5.7	70.4
Victoria	1 156.7	197.1	1 353.8	65.9	84.2	1 438.1	539.7	1 977.8	5.4	5.9	72.7
Queensland	930.0	148.5	1 078.4	37.1	48.0	1 126.4	416.0	1 542.3	3.8	4.3	73.0
South Australia	343.5	58.5	402.0	22.7	27.6	429.6	185.8	615.4	6.2	6.4	69.8
Western Australia	496.1	80.1	576.2	21.5	27.1	603.4	192.8	796.1	4.1	4.5	75.8
Tasmania	100.2	18.4	118.5	6.5	7.7	126.2	63.5	189.8	6.1	6.1	66.5
Northern Territory	44.1	7.2	51.3	1.6	4.1	55.4	19.8	75.2	3.5	7.3	73.7
Australian Capital Territory	81.5	12.5	94.0	2.8	4.6	98.5	26.8	125.3	3.4	4.6	78.6
Australia	4 674.7	776.7	5 451.4	241.7	309.8	5 761.2	2 234.6	7 995.8	4.9	5.4	72.1
FEMALES											
New South Wales	826.2	597.2	1 423.4	61.9	98.3	1 521.7	1 236.5	2 758.3	7.0	6.5	55.2
Victoria	602.9	501.6	1 104.5	48.7	77.7	1 182.1	890.7	2 072.8	7.5	6.6	57.0
Queensland	494.6	382.3	876.9	39.5	56.0	932.8	647.3	1 580.2	7.4	6.0	59.0
South Australia	165.9	164.9	330.7	12.8	18.3	349.0	289.2	638.2	7.2	5.2	54.7
Western Australia	236.0	214.8	450.8	15.0	28.2	478.9	327.4	806.3	6.0	5.9	59.4
Tasmania	49.8	49.0	98.8	4.1	6.6	105.3	93.5	198.9	7.6	6.2	53.0
Northern Territory	28.7	13.7	42.4	1.6	2.9	45.3	25.0	70.3	5.1	6.3	64.4
Australian Capital Territory	54.9	32.3	87.2	1.7	3.3	90.5	42.0	132.5	3.0	3.7	68.3
Australia	2 459.0	1 955.7	4 414.7	185.3	291.1	4 705.8	3 551.7	8 257.5	7.0	6.2	57.0
PERSONS											
New South Wales	2 348.8	851.7	3 200.5	145.5	204.9	3 405.3	2 026.8	5 432.1	5.8	6.0	62.7
Victoria	1 759.6	698.7	2 458.3	114.6	161.9	2 620.2	1 430.4	4 050.6	6.1	6.2	64.7
Queensland	1 424.5	530.7	1 955.3	76.5	103.9	2 059.2	1 063.3	3 122.5	5.1	5.0	65.9
South Australia	509.4	223.4	732.8	35.5	45.8	778.6	475.0	1 253.7	6.5	5.9	62.1
Western Australia	732.2	294.8	1 027.0	36.5	55.3	1 082.3	520.2	1 602.5	4.7	5.1	67.5
Tasmania	150.0	67.4	217.3	10.7	14.3	231.6	157.0	388.6	6.6	6.2	59.6
Northern Territory	72.9	20.9	93.7	3.2	6.9	100.7	44.8	145.5	4.2	6.9	69.2
Australian Capital Territory	136.4	44.7	181.2	4.6	7.9	189.0	68.8	257.8	3.2	4.2	73.3
Australia	7 133.7	2 732.3	9 866.0	427.0	600.9	10 467.0	5 786.3	16 253.3	5.6	5.7	64.4

	EMPLOYED		UNEMPLOYED		UNEMPLOYMENT RATE		Participation rate	Employment to population ratio	Unemployment to population ratio – looking for full-time work
	Full time	Total	Looking for f/t work	Total	Looking for f/t work	Total			
	'000	'000	'000	'000	%	%			
MALES									
February 2002	140.1	326.1	39.7	76.3	22.1	18.9	58.3	47.3	5.8
February 2003	142.8	334.5	38.5	72.4	21.3	17.8	58.3	48.0	5.5
2004									
February	154.8	356.2	35.5	66.6	18.6	15.7	59.8	50.4	5.0
March	153.4	357.0	36.1	67.2	19.1	15.8	60.0	50.5	5.1
April	151.8	357.1	36.5	67.7	19.4	15.9	60.0	50.4	5.2
May	150.1	356.4	36.5	68.1	19.6	16.0	59.8	50.3	5.2
June	148.6	354.6	36.2	68.4	19.6	16.2	59.5	50.0	5.1
July	147.5	352.1	35.9	68.9	19.6	16.4	59.1	49.6	5.1
August	147.1	349.4	35.6	69.3	19.5	16.6	58.7	49.2	5.0
September	148.0	347.9	35.4	69.2	19.3	16.6	58.5	48.9	5.0
October	150.4	348.4	35.3	68.7	19.0	16.5	58.5	49.0	5.0
November	153.5	350.5	35.3	67.9	18.7	16.2	58.7	49.2	5.0
December	157.2	353.6	35.3	67.0	18.4	15.9	59.0	49.6	5.0
2005									
January	161.0	357.0	35.4	66.3	18.0	15.7	59.4	50.1	5.0
February	164.6	360.5	35.5	65.5	17.7	15.4	59.8	50.5	5.0
FEMALES									
February 2002	78.2	329.4	28.7	63.7	26.9	16.2	59.3	49.7	4.3
February 2003	80.5	348.7	27.7	61.1	25.6	14.9	61.2	52.1	4.1
2004									
February	82.6	355.0	29.4	64.1	26.2	15.3	61.7	52.3	4.3
March	83.4	357.7	29.9	64.2	26.4	15.2	62.1	52.6	4.4
April	84.0	359.5	30.2	64.6	26.4	15.2	62.3	52.8	4.4
May	84.6	359.6	30.2	65.5	26.3	15.4	62.4	52.8	4.4
June	85.3	358.1	29.8	66.2	25.9	15.6	62.3	52.5	4.4
July	86.2	355.8	28.9	66.7	25.1	15.8	61.9	52.2	4.2
August	87.2	353.5	27.8	66.5	24.1	15.8	61.5	51.8	4.1
September	88.2	352.4	26.6	65.5	23.1	15.7	61.2	51.6	3.9
October	89.0	352.7	25.7	63.7	22.4	15.3	61.0	51.6	3.8
November	89.1	353.7	25.2	61.7	22.1	14.9	60.8	51.7	3.7
December	88.7	355.0	25.2	59.8	22.1	14.4	60.7	51.9	3.7
2005									
January	88.0	356.3	25.4	57.9	22.4	14.0	60.6	52.1	3.7
February	86.9	357.7	26.0	56.3	23.0	13.6	60.5	52.3	3.8
PERSONS									
February 2002	218.2	655.6	68.4	140.0	23.9	17.6	58.8	48.5	5.1
February 2003	223.3	683.2	66.2	133.5	22.9	16.3	59.7	50.0	4.8
2004									
February	237.4	711.2	64.8	130.7	21.5	15.5	60.7	51.3	4.7
March	236.8	714.8	66.1	131.4	21.8	15.5	61.0	51.5	4.8
April	235.8	716.6	66.7	132.3	22.0	15.6	61.1	51.6	4.8
May	234.7	716.0	66.7	133.5	22.1	15.7	61.1	51.5	4.8
June	233.9	712.8	66.0	134.6	22.0	15.9	60.9	51.2	4.7
July	233.7	707.8	64.8	135.6	21.7	16.1	60.5	50.8	4.7
August	234.3	702.9	63.4	135.8	21.3	16.2	60.1	50.5	4.5
September	236.3	700.3	62.0	134.7	20.8	16.2	59.8	50.2	4.4
October	239.3	701.1	61.0	132.4	20.3	15.9	59.7	50.3	4.4
November	242.7	704.3	60.5	129.6	20.0	15.5	59.7	50.5	4.3
December	245.9	708.6	60.5	126.8	19.8	15.2	59.8	50.7	4.3
2005									
January	249.0	713.4	60.8	124.2	19.6	14.8	60.0	51.1	4.4
February	251.5	718.2	61.4	121.9	19.6	14.5	60.2	51.4	4.4

	EMPLOYED		UNEMPLOYED		UNEMPLOYMENT RATE		Participation rate	Employment to population ratio	Unemployment to population ratio – looking for full-time work
	Full time	Total	Looking for f/t work	Total	Looking for f/t work	Total			
	'000	'000	'000	'000	%	%			
MALES									
February 2002	139.2	329.3	43.7	78.2	23.9	19.2	59.0	47.7	6.3
February 2003	144.1	335.0	37.4	71.1	20.6	17.5	58.2	48.0	5.4
2004									
February	153.0	351.0	36.2	65.5	19.2	15.7	58.9	49.7	5.1
March	154.9	359.1	37.7	70.1	19.6	16.3	60.7	50.8	5.3
April	154.5	358.0	35.4	67.0	18.6	15.8	60.0	50.6	5.0
May	146.7	355.6	37.4	66.6	20.3	15.8	59.6	50.2	5.3
June	146.1	356.2	36.1	70.4	19.8	16.5	60.1	50.2	5.1
July	150.6	353.9	34.9	65.3	18.8	15.6	59.0	49.9	4.9
August	148.2	343.0	34.3	69.7	18.8	16.9	58.1	48.3	4.8
September	147.3	347.2	39.3	73.3	21.1	17.4	59.1	48.8	5.5
October	147.4	342.7	33.1	68.7	18.3	16.7	57.8	48.2	4.7
November	152.9	350.1	34.0	65.6	18.2	15.8	58.4	49.2	4.8
December	153.3	353.8	36.5	67.5	19.2	16.0	59.1	49.6	5.1
2005									
January	169.2	359.8	35.7	65.1	17.4	15.3	59.6	50.5	5.0
February	165.1	364.1	35.4	66.6	17.7	15.5	60.4	51.1	5.0
FEMALES									
February 2002	78.7	331.2	27.5	63.1	25.9	16.0	59.5	50.0	4.1
February 2003	80.8	348.2	27.9	61.7	25.7	15.1	61.2	52.0	4.2
2004									
February	78.4	349.5	29.3	64.5	27.2	15.6	61.0	51.5	4.3
March	84.0	359.2	30.2	63.3	26.4	15.0	62.1	52.8	4.4
April	100.2	367.7	30.2	63.0	23.1	14.6	63.3	54.0	4.4
May	87.7	359.2	30.0	65.5	25.5	15.4	62.3	52.7	4.4
June	84.8	358.7	27.9	65.3	24.7	15.4	62.2	52.6	4.1
July	81.4	353.8	33.1	68.6	28.9	16.2	61.9	51.9	4.8
August	87.0	349.8	26.6	68.1	23.4	16.3	61.2	51.3	3.9
September	90.5	353.2	26.6	66.0	22.7	15.7	61.4	51.7	3.9
October	90.7	354.0	25.5	61.9	22.0	14.9	60.9	51.8	3.7
November	88.2	352.1	20.6	59.0	19.0	14.4	60.1	51.5	3.0
December	91.1	355.6	29.7	66.5	24.6	15.8	61.7	52.0	4.3
2005									
January	85.3	354.4	23.3	53.6	21.5	13.1	59.7	51.8	3.4
February	85.8	361.1	27.8	55.7	24.5	13.4	61.0	52.8	4.1
PERSONS									
February 2002	217.9	660.5	71.2	141.3	24.6	17.6	59.3	48.8	5.3
February 2003	224.9	683.2	65.3	132.8	22.5	16.3	59.7	50.0	4.8
2004									
February	231.4	700.5	65.5	130.0	22.1	15.7	59.9	50.5	4.7
March	238.9	718.2	67.9	133.4	22.1	15.7	61.4	51.8	4.9
April	254.8	725.7	65.5	129.9	20.5	15.2	61.6	52.3	4.7
May	234.4	714.7	67.4	132.1	22.3	15.6	60.9	51.4	4.8
June	231.0	715.0	64.0	135.7	21.7	16.0	61.1	51.4	4.6
July	232.0	707.8	68.0	133.9	22.7	15.9	60.5	50.8	4.9
August	235.2	692.8	60.8	137.8	20.6	16.6	59.6	49.7	4.4
September	237.9	700.4	65.9	139.3	21.7	16.6	60.2	50.2	4.7
October	238.1	696.7	58.6	130.5	19.8	15.8	59.3	50.0	4.2
November	241.0	702.2	54.6	124.6	18.5	15.1	59.2	50.3	3.9
December	244.4	709.3	66.2	134.0	21.3	15.9	60.4	50.8	4.7
2005									
January	254.5	714.2	58.9	118.7	18.8	14.3	59.6	51.1	4.2
February	250.9	725.2	63.3	122.3	20.1	14.4	60.7	51.9	4.5

	EMPLOYED			UNEMPLOYED			UNEMPLOYMENT RATE			Unemployment to population ratio – looking for full-time work		
	Full time	Part time	Total	Looking for f/t work	Total	Labour force	Not in labour force	Civilian population aged 15–19 years	Looking for f/t work	Total	Participation rate	
	'000	'000	'000	'000	'000	'000	'000	'000	%	%	%	%
NOT ATTENDING FULL-TIME EDUCATION												
Males												
February 2002	133.6	52.1	185.7	43.5	45.7	231.5	22.5	253.9	24.6	19.8	91.2	17.1
February 2003	140.9	45.5	186.3	36.6	40.9	227.2	23.0	250.2	20.6	18.0	90.8	14.6
February 2004	147.5	42.7	190.2	35.6	39.4	229.7	26.0	255.7	19.4	17.2	89.8	13.9
February 2005	159.8	45.3	205.1	32.4	35.5	240.6	25.6	266.2	16.9	14.8	90.4	12.2
Females												
February 2002	76.9	60.8	137.7	24.7	26.4	164.2	30.7	194.8	24.3	16.1	84.3	12.7
February 2003	75.4	58.8	134.3	26.2	28.6	162.8	29.5	192.4	25.8	17.5	84.6	13.6
February 2004	69.4	69.3	138.8	29.6	32.9	171.7	33.0	204.7	29.9	19.2	83.9	14.5
February 2005	78.1	66.0	144.1	25.2	28.7	172.7	31.2	204.0	24.4	16.6	84.7	12.4
Persons												
February 2002	210.6	112.9	323.5	68.3	72.1	395.6	53.1	448.8	24.5	18.2	88.2	15.2
February 2003	216.3	104.3	320.6	62.8	69.5	390.1	52.5	442.6	22.5	17.8	88.1	14.2
February 2004	216.9	112.0	329.0	65.2	72.3	401.3	59.0	460.3	23.1	18.0	87.2	14.2
February 2005	237.9	111.2	349.1	57.6	64.2	413.3	56.8	470.1	19.5	15.5	87.9	12.3
ATTENDING FULL-TIME EDUCATION												
Males												
February 2002	11.4	135.2	146.6	7.1	45.1	191.7	244.4	436.1	38.3	23.5	44.0	1.6
February 2003	9.4	142.8	152.2	6.9	42.2	194.4	252.8	447.2	42.3	21.7	43.5	1.5
February 2004	12.7	152.1	164.8	6.4	37.2	202.1	249.1	451.2	33.6	18.4	44.8	1.4
February 2005	13.6	149.6	163.2	8.6	42.2	205.5	241.5	447.0	38.7	20.6	46.0	1.9
Females												
February 2002	6.6	191.1	197.8	6.6	45.1	242.9	224.9	467.8	50.0	18.6	51.9	1.4
February 2003	9.9	209.0	218.9	6.0	41.7	260.6	216.8	477.4	37.8	16.0	54.6	1.3
February 2004	13.0	203.1	216.1	4.8	41.1	257.2	217.3	474.5	26.8	16.0	54.2	1.0
February 2005	11.8	210.9	222.7	7.7	35.4	258.1	221.9	479.9	39.3	13.7	53.8	1.6
Persons												
February 2002	18.0	326.4	344.4	13.7	90.2	434.6	469.3	903.9	43.2	20.8	48.1	1.5
February 2003	19.4	351.7	371.1	12.9	83.9	455.0	469.6	924.6	40.0	18.4	49.2	1.4
February 2004	25.7	355.2	380.9	11.2	78.4	459.3	466.4	925.7	30.3	17.1	49.6	1.2
February 2005	25.4	360.5	385.9	16.2	77.6	463.5	463.4	926.9	39.0	16.7	50.0	1.8
TOTAL												
Males												
February 2002	145.0	187.3	332.3	50.6	90.9	423.2	266.9	690.1	25.9	21.5	61.3	7.3
February 2003	150.3	188.2	338.5	43.5	83.1	421.7	275.7	697.4	22.4	19.7	60.5	6.2
February 2004	160.2	194.8	355.1	42.0	76.6	431.7	275.1	706.8	20.8	17.8	61.1	5.9
February 2005	173.4	194.9	368.3	41.0	77.7	446.1	267.1	713.2	19.1	17.4	62.5	5.7
Females												
February 2002	83.6	251.9	335.5	31.4	71.5	407.0	255.6	662.6	27.3	17.6	61.4	4.7
February 2003	85.3	267.8	353.1	32.2	70.3	423.4	246.4	669.8	27.4	16.6	63.2	4.8
February 2004	82.4	272.4	354.9	34.4	74.0	428.9	250.3	679.2	29.4	17.3	63.1	5.1
February 2005	89.9	276.8	366.8	32.9	64.0	430.8	253.1	683.9	26.8	14.9	63.0	4.8
Persons												
February 2002	228.6	439.3	667.8	82.0	162.4	830.2	522.5	1 352.7	26.4	19.6	61.4	6.1
February 2003	235.6	456.0	691.7	75.7	153.4	845.1	522.1	1 367.2	24.3	18.2	61.8	5.5
February 2004	242.7	467.3	709.9	76.4	150.7	860.6	525.4	1 386.0	23.9	17.5	62.1	5.5
February 2005	263.3	471.8	735.1	73.9	141.8	876.8	520.2	1 397.0	21.9	16.2	62.8	5.3

	EMPLOYED			UNEMPLOYED		Labour force	Not in labour force	Civilian population aged 15–19 years	UNEMPLOYMENT RATE		Participation rate	Unemployment to population ratio – looking for full-time work
	Full time	Part time	Total	Looking for f/t work	Total				Looking for f/t work	Total		
	'000	'000	'000	'000	'000				'000	'000		
NOT ATTENDING FULL-TIME EDUCATION												
New South Wales	74.6	34.9	109.5	17.4	20.8	130.3	18.1	148.4	18.9	16.0	87.8	11.7
Victoria	44.1	19.5	63.7	16.6	16.9	80.5	10.7	91.2	27.3	21.0	88.3	18.2
Queensland	58.7	27.7	86.4	10.2	11.3	97.7	10.8	108.5	14.7	11.5	90.0	9.4
South Australia	15.0	10.3	25.2	4.8	4.9	30.2	4.8	35.0	24.2	16.4	86.2	13.6
Western Australia	34.3	13.5	47.8	5.8	6.6	54.4	6.5	60.9	14.5	12.1	89.3	9.5
Tasmania	5.6	2.6	8.2	1.8	1.9	10.0	1.8	11.9	24.3	18.7	84.8	15.1
Northern Territory	1.6	1.3	3.0	*0.6	1.2	4.1	3.1	7.3	*27.6	28.6	56.8	*8.5
Australian Capital Territory	4.0	1.4	5.4	*0.6	*0.6	6.1	*1.0	7.0	*12.2	*10.6	86.3	*7.9
Australia	237.9	111.2	349.1	57.6	64.2	413.3	56.8	470.1	19.5	15.5	87.9	12.3
ATTENDING FULL-TIME EDUCATION												
New South Wales	7.9	109.1	117.0	6.4	25.5	142.5	166.5	309.0	44.7	17.9	46.1	2.1
Victoria	5.8	96.9	102.7	4.7	23.6	126.3	122.2	248.5	44.8	18.7	50.8	1.9
Queensland	6.4	78.4	84.8	*2.1	12.5	97.3	71.5	168.7	*24.5	12.8	57.6	*1.2
South Australia	*1.9	27.2	29.0	*1.1	4.9	33.9	35.1	69.0	*36.4	14.4	49.2	*1.6
Western Australia	*2.4	31.7	34.1	*0.8	7.6	41.7	44.3	86.0	*23.9	18.2	48.5	*0.9
Tasmania	*0.6	7.5	8.0	*0.9	1.6	9.6	12.8	22.4	*62.3	16.5	42.9	*4.1
Northern Territory	*0.1	2.6	2.7	*0.2	*0.7	3.3	3.7	7.0	*72.7	*20.4	47.4	*2.7
Australian Capital Territory	*0.4	7.2	7.6	*0.1	1.2	8.8	7.4	16.2	*23.5	13.2	54.2	*0.8
Australia	25.4	360.5	385.9	16.2	77.6	463.5	463.4	926.9	39.0	16.7	50.0	1.8
TOTAL												
New South Wales	82.5	144.0	226.5	23.8	46.3	272.8	184.6	457.4	22.4	17.0	59.6	5.2
Victoria	49.9	116.4	166.3	21.3	40.5	206.9	132.8	339.7	29.9	19.6	60.9	6.3
Queensland	65.1	106.1	171.2	12.2	23.7	195.0	82.3	277.2	15.8	12.2	70.3	4.4
South Australia	16.8	37.4	54.3	5.9	9.8	64.1	39.9	104.1	25.8	15.4	61.6	5.6
Western Australia	36.7	45.2	81.9	6.6	14.2	96.1	50.8	146.8	15.2	14.8	65.4	4.5
Tasmania	6.1	10.1	16.2	2.7	3.5	19.7	14.6	34.3	30.6	17.6	57.4	7.9
Northern Territory	1.7	3.9	5.6	*0.8	1.9	7.5	6.8	14.3	*32.3	24.9	52.2	*5.6
Australian Capital Territory	4.4	8.7	13.1	*0.7	1.8	14.9	8.4	23.3	*13.4	12.2	63.9	*2.9
Australia	263.3	471.8	735.1	73.9	141.8	876.8	520.2	1 397.0	21.9	16.2	62.8	5.3

* estimate is subject to sampling variability too high for most practical purposes

WHAT IF...? REVISIONS TO TREND ESTIMATES

EFFECT OF NEW SEASONALLY ADJUSTED ESTIMATES ON TREND ESTIMATES

TREND REVISIONS

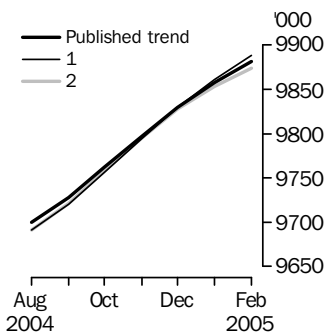
Each time new seasonally adjusted estimates become available, trend estimates are revised. This revision is a combined result of the concurrent seasonal adjustment process and the application of surrogates of the Henderson average to the seasonally adjusted series (see paragraphs 21 to 27 of the Explanatory Notes).

The examples in the tables below show two illustrative scenarios and the consequent revisions to previous trend estimates of employment and the unemployment rate. The revisions in the scenarios below are only due to the use of surrogates of the Henderson average, as the impact of revision of the seasonally adjusted estimates can not be estimated in advance.

- (1) The March seasonally adjusted estimate is *higher* than the February estimate by:
 - 0.26% for employment
 - 1.80% for the unemployment rate
- (2) The March seasonally adjusted estimate is *lower* than the February estimate by:
 - 0.26% for employment
 - 1.80% for the unemployment rate

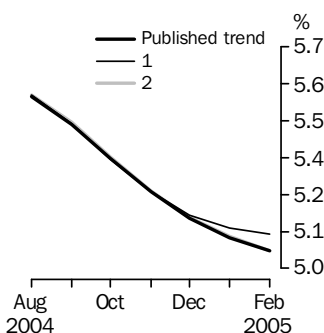
The percentage changes of 0.26% and 1.80% were chosen because they represent the average absolute monthly percentage changes in employment and the unemployment rate respectively.

EMPLOYMENT



	Trend as published	WHAT IF NEXT MONTH'S SEASONALLY ADJUSTED ESTIMATE IS:	
		(1) 9 915.4 i.e. rises by 0.26%	(2) 9 864.0 i.e. falls by 0.26%
2004			
November	9 797.0	9 794.5	9 795.3
December	9 829.2	9 829.7	9 827.4
2005			
January	9 857.9	9 861.1	9 853.5
February	9 881.3	9 888.7	9 874.3

UNEMPLOYMENT RATE



	Trend as published	WHAT IF NEXT MONTH'S SEASONALLY ADJUSTED ESTIMATE IS:	
		(1) 5.2 i.e. rises by 1.80%	(2) 5.0 i.e. falls by 1.80%
2004			
November	5.2	5.2	5.2
December	5.2	5.2	5.2
2005			
January	5.1	5.1	5.1
February	5.1	5.1	5.1

EXPLANATORY NOTES

INTRODUCTION

1 This publication contains estimates of the civilian labour force derived from the Labour Force Survey component of the Monthly Population Survey. The full time series for estimates from this publication are also available electronically – see *Labour Force, Australia, Spreadsheets* (cat. no. 6202.0.55.001). More detailed estimates are released one week after this publication in various electronic formats – see *Labour Force, Australia, Detailed – Electronic Delivery* (cat. no. 6291.0.55.001).

CONCEPTS, SOURCES AND METHODS

2 The conceptual framework used in Australia's Labour Force Survey aligns closely with the standards and guidelines set out in Resolutions of International Conferences of Labour Statisticians. Descriptions of the underlying concepts and structure of Australia's labour force statistics, and the sources and methods used in compiling the estimates, are presented in *Labour Statistics: Concepts, Sources and Methods* (cat. no. 6102.0.55.001) which is available on the ABS web site <<http://www.abs.gov.au>> (Methods, Classifications, Concepts & Standards).

LABOUR FORCE SURVEY

3 The Labour Force Survey is based on a multi-stage area sample of private dwellings (currently about 30,000 houses, flats, etc.) and a list sample of non-private dwellings (hotels, motels, etc.), and covers about 0.45% of the population of Australia. Information is obtained from the occupants of selected dwellings by specially trained interviewers.

4 The information is collected using computer-assisted interviewing (CAI), whereby responses are recorded directly onto an electronic questionnaire on a notebook computer. The CAI method was progressively implemented from October 2003 to August 2004, replacing the 'pen and paper' method previously used.

5 Households selected for the Labour Force Survey are interviewed each month for eight months, with one-eighth of the sample being replaced each month. The first interview is conducted face-to-face. Subsequent interviews are conducted by telephone (if acceptable to the respondent).

6 The interviews are generally conducted during the two weeks beginning on the Monday between the 6th and 12th of each month. The information obtained relates to the week before the interview (i.e. the reference week). Each year, to deal with operational difficulties involved with collecting and processing the Labour Force Survey around the Christmas and New Year holiday period, interviews for December start four weeks after November interviews start, and January interviews start five weeks after December interviews start. As a result, January interviewing may commence as early as the 8th or as late as the 14th, depending on the year. Occasionally, circumstances that present significant operational difficulties for survey collection can result in a change to the normal pattern for the start of interviewing.

7 Estimates from the Labour Force Survey are published first in this publication 31 days after the commencement of interviews for that month, with the exception of estimates for each December which are published 38 days after the commencement of interviews.

SCOPE OF SURVEY

8 The Labour Force Survey includes all persons aged 15 years and over except members of the permanent defence forces, certain diplomatic personnel of overseas governments customarily excluded from census and estimated population counts, overseas residents in Australia, and members of non-Australian defence forces (and their dependants) stationed in Australia.

COVERAGE

9 In the Labour Force Survey, coverage rules are applied which aim to ensure that each person is associated with only one dwelling, and hence has only one chance of selection. The coverage rules are necessarily a balance between theoretical and operational considerations. Nevertheless, the chance of a person being enumerated at two separate dwellings in the survey is considered to be negligible.

EXPLANATORY NOTES *continued*

POPULATION BENCHMARKS

10 Labour Force Survey estimates are calculated in such a way as to add up to independent estimates of the civilian population aged 15 years and over (population benchmarks). From February 2004, labour force estimates have been compiled using benchmarks based on the results of the 2001 Census of Population and Housing. Revisions were made to historical estimates from January 1999 to January 2004.

COMPARABILITY OF SERIES

11 From April 1986, the definition of employed persons was changed to include persons who worked without pay between 1 and 14 hours per week in a family business or on a farm (i.e. contributing family workers). For further information, see paragraphs 36 and 37 of the Explanatory Notes to the February 1987 issue of *Labour Force, Australia* (cat. no. 6203.0).

12 The ABS introduced telephone interviewing into the Labour Force Survey in August 1996. Implementation was phased in for each new sample group from August 1996 to February 1997. During the period of implementation, the new method produced different estimates than would have been obtained under the old methodology. The effect dissipated over the final months of implementation and was no longer discernible from February 1997. The estimates for February 1997 and onwards are directly comparable to estimates for periods prior to August 1996. For further details, see the feature article in the June 1997 issue of *Labour Force, Australia* (cat. no. 6203.0).

13 From April 2001 the Labour Force Survey has been conducted using a redesigned questionnaire containing additional data items and some minor definitional changes. The definition of unemployed persons was changed to include all persons who were waiting to start work and were available to start in the reference week. This change was introduced in February 2004, when historical unit record data were revised from April 2001 to January 2004. This revision created a small trend break at April 2001 in unemployed persons and unemployment rate series. For further details, see *Information Paper: Forthcoming Changes to Labour Force Statistics* (cat. no. 6292.0).

14 Core labour force series were revised in April 2001 for the period April 1986 to March 2001 for the remaining definitional changes introduced with the redesigned questionnaire, to reduce the impact of the changes on labour force series. For further details, see *Information Paper: Implementing the Redesigned Labour Force Survey Questionnaire* (cat. no. 6295.0) and *Information Paper: Questionnaires Used in the Labour Force Survey* (cat. no. 6232.0).

SURVEY SAMPLE REDESIGN

15 The Labour Force Survey sample was last reselected using information collected in the 2001 Census of Population and Housing.

16 The bulk of the new sample was phased in over the period November 2002 to June 2003, with one-eighth of this portion of the sample being introduced every month. The remainder of the sample (about 18% of the total), which covers less settled areas of Australia and non-private dwellings was rotated in full for New South Wales, Victoria, Tasmania, Northern Territory and Australian Capital Territory in November 2002, and for Queensland, South Australia and Western Australia in December 2002. Such a pattern of implementation means that any changes to labour force estimates due to differences between the two samples, or any other influences, were spread over the eight months.

17 For further details, see *Information Paper: Labour Force Survey Sample Design* (cat. no. 6269.0) and *Technical Report: New Labour Force Survey sample selections: analysis of the effect on estimates* in the October 2003 issue of *Australian Labour Market Statistics* (cat. no. 6105.0).

EXPLANATORY NOTES *continued*

RELIABILITY OF ESTIMATES

18 Two types of error are possible in an estimate based on a sample survey: sampling error and non-sampling error.

19 Sampling error occurs because a sample, rather than the entire population, is surveyed. One measure of the likely difference resulting from not including all dwellings in the survey is given by the standard error. There are about two chances in three that a sample estimate will differ by less than one standard error from the figure that would have been obtained if all dwellings had been included in the survey, and about nineteen chances in twenty that the difference will be less than two standard errors. Standard errors of estimates for the latest month and of estimates of movements since the previous month are shown on pages 27 and 28. Standard errors of other estimates and other movements may be determined by using information in *Information Paper: Labour Force Survey Standard Errors* (cat. no. 6298.0) which is available free on the ABS web site <<http://www.abs.gov.au>> (Papers & Articles).

20 Non-sampling error arises from inaccuracies in collecting, recording and processing the data. Every effort is made to minimise reporting error by the careful design of questionnaires, intensive training and supervision of interviewers, and efficient data processing procedures. Non-sampling error also arises because information cannot be obtained from all persons selected in the survey. The Labour Force Survey receives a high level of co-operation from individuals in selected dwellings, with the average response rate over the last year being 96%. See Glossary for definition of response rate.

SEASONAL ADJUSTMENT AND TREND ESTIMATION

21 Seasonal adjustment is a means of removing the estimated effects of normal seasonal variation from the series so that the effects of other influences on the series can be more clearly recognised. Seasonal adjustment does not aim to remove the irregular or non-seasonal influences which may be present in any particular month. This means that month-to-month movements of the seasonally adjusted estimates may not be reliable indicators of trend behaviour.

22 The Labour Force Survey uses the concurrent seasonal adjustment method to derive seasonal factors. Concurrent seasonal adjustment uses data up to the current month to estimate seasonal factors for the current and all previous months. This process can result in revisions each month to estimates for earlier periods. However, in most instances, the only noticeable revisions will be to the seasonally adjusted estimates for the previous month and one year prior to the current month.

23 Seasonal adjustment is able to remove the effect of events which occur at the same time in the survey every year. However, there are some events, like holidays, which are not always at the same time in the survey cycle or which are not at the same time across Australia. The effects of these types of events on LFS estimates cannot in all cases be removed, because the pattern of their effects cannot be determined. However, two events which are adjusted for in the seasonally adjusted series are the January interview start date and the timing of Easter.

24 For more information on concurrent seasonal adjustment and survey proximity to holiday periods, see *Information Paper: Forthcoming Changes to Labour Force Statistics* (cat. no. 6292.0).

25 While seasonal factors for the complete time series are estimated each month, they will continue to be reviewed annually at a more detailed level to take into account each additional year's original data. This annual review will not normally result in significant changes to published estimates. The review will be conducted in February each year with the results released in the February issue of this publication.

EXPLANATORY NOTES *continued*

SEASONAL ADJUSTMENT AND TREND ESTIMATION *continued*

26 The smoothing of seasonally adjusted series to produce 'trend' series reduces the impact of the irregular component of the seasonally adjusted series. These trend estimates are derived by applying a 13-term Henderson-weighted moving average to all months except the last six. The last six monthly trend estimates are obtained by applying surrogates of the Henderson average to the seasonally adjusted series. Trend estimates are used to analyse the underlying behaviour of a series over time.

27 While this smoothing technique enables estimates to be produced for the latest month, it does result in revisions in addition to those caused by the revision of seasonally adjusted estimates. Generally, revisions due to the use of surrogates of the Henderson average become smaller, and after three months have a negligible impact on the series.

28 Trend estimates are published for the Northern Territory in table 10 and for the Australian Capital Territory in table 11. Unadjusted series for the two territories have shown, historically, a high degree of variability, which can lead to considerable revisions to the seasonally adjusted estimates each month when seasonal factors are estimated. For this reason, seasonally adjusted estimates are not currently published for the two Territories. In addition, caution should be exercised in the interpretation of trend estimates for the two territories, particularly for the three most recent months, where revisions may be relatively large.

29 For further information, see *A Guide to Interpreting Time Series – Monitoring Trends* (cat. no. 1349.0) or contact the Assistant Director, Time Series Analysis on (02) 6252 6345.

RELATED PUBLICATIONS

30 Users may also wish to refer to *Australian Labour Market Statistics* (cat. no. 6105.0). This publication contains additional tables and a detailed list of related publications. For further information about this publication, please contact the Assistant Director, Labour Market Statistics on (02) 6252 7636.

31 ABS Information about the labour market can be found on the Labour theme page on the ABS web site <<http://www.abs.gov.au>>(Themes), or from ABS Bookshops.

32 Current publications and other products released by the ABS are listed in the *Catalogue of Publications and Products* (cat. no. 1101.0). The Catalogue is available from any ABS office or the ABS web site <<http://www.abs.gov.au>> (AusStats). The ABS also issues a daily Release Advice on the web site (AusStats) which details products to be released in the week ahead.

DATA AVAILABLE ON REQUEST

33 As well as the statistics included in this and related publications, the ABS may have other relevant data available. Inquiries should be made to Erika Maxim on (02) 6252 6525 or to any ABS office.

EFFECTS OF ROUNDING

34 Estimates have been rounded and discrepancies may occur between sums of the component items and totals.

35 Estimates of movement shown in this publication are obtained by taking the difference of unrounded estimates. The movement estimate is then rounded to one decimal place. Therefore where a discrepancy occurs between the reported movement and the difference of the rounded estimates, the reported movement will be more accurate.

SYMBOLS AND OTHER USAGES

36 SYMBOLS AND OTHER USAGES
pts percentage points

STANDARD ERRORS

STANDARD ERRORS

The estimates in this publication are based on information gained from the occupants of a sample survey of dwellings. Because the entire population is not surveyed, the published estimates are subject to sampling error. The most common way of quantifying such sampling error is to calculate the standard error for the published estimate or statistic. For more information, see paragraph 19 of the Explanatory Notes.

LEVEL ESTIMATES

To illustrate, let us say the published level estimate for employed persons aged 15–19 years is 700,000. The calculated standard error in this case is 9,800. The standard error is then used to interpret the level estimate of 700,000. For instance, the standard error of 9,800 indicates that:

- There are approximately two chances in three that the real value falls within the range 690,200 to 709,800 (700,000 + or – 9,800)
- There are approximately nineteen chances in twenty that the real value falls within the range 680,400 to 719,600 (700,000 + or – 19,600).

The real value in this case is the result we would obtain if we could enumerate the total population.

The following table shows the standard errors for this month's level estimates.

AUSTRALIA												
		NSW	Vic.	Qld	SA	WA	Tas.	NT	ACT	Males	Females	Persons
Aged 15 years and over												
Employed												
Full time	'000	18.9	14.3	11.5	5.1	5.6	1.9	1.3	1.9	22.1	16.3	29.8
Part time	'000	10.7	8.9	7.8	3.7	4.1	1.4	0.8	1.1	10.3	14.9	17.0
Total	'000	22.9	17.3	12.9	5.9	6.2	2.2	1.4	2.1	24.4	21.3	39.8
Unemployed												
Looking for f/t work	'000	5.2	4.1	3.6	1.8	2.0	0.7	0.4	0.5	6.6	6.0	8.2
Looking for p/t work	'000	3.9	3.0	2.3	1.1	1.5	0.5	0.4	0.4	4.1	4.9	5.8
Total	'000	5.8	4.7	4.1	2.0	2.3	0.8	0.5	0.6	7.2	7.1	9.3
Labour force	'000	23.8	18.0	13.2	6.1	6.3	2.2	1.4	2.2	25.3	22.2	42.2
Not in labour force	'000	17.3	12.8	10.2	5.0	5.0	1.9	1.1	1.4	15.7	19.1	25.4
Unemployment rate												
Looking for f/t work	pts	0.2	0.2	0.2	0.3	0.3	0.4	0.5	0.3	0.1	0.2	0.1
Looking for p/t work	pts	0.4	0.4	0.4	0.5	0.5	0.6	1.7	0.8	0.5	0.2	0.2
Total	pts	0.2	0.2	0.2	0.3	0.2	0.3	0.5	0.3	0.1	0.2	0.1
Participation rate	pts	0.4	0.4	0.4	0.5	0.4	0.6	1.0	0.8	0.3	0.3	0.3
Aged 15–19 years												
Employed												
Full time	'000	4.4	3.1	3.3	1.3	2.0	0.6	0.3	0.5	5.8	4.6	6.8
Part time	'000	5.2	4.1	4.1	1.8	2.1	0.7	0.4	0.6	6.1	6.9	8.5
Total	'000	6.0	4.7	5.0	2.1	2.6	0.8	0.5	0.7	7.7	7.7	10.1
Unemployed												
Looking for f/t work	'000	2.8	2.3	1.6	0.9	1.0	0.4	0.2	0.2	3.3	3.0	4.2
Looking for p/t work	'000	2.8	2.2	1.6	0.7	1.1	0.2	0.3	0.3	3.2	3.0	4.1
Total	'000	3.6	2.9	2.2	1.1	1.4	0.4	0.3	0.3	4.3	4.0	5.4
Labour force	'000	6.5	5.2	5.2	2.3	2.8	0.9	0.5	0.7	8.3	8.2	10.8
Not in labour force	'000	5.6	4.3	3.7	1.9	2.2	0.8	0.5	0.6	6.8	6.7	8.8
Unemployment rate												
Looking for f/t work	pts	2.6	3.2	2.1	3.8	2.3	4.6	9.2	4.6	1.6	2.5	1.3
Looking for p/t work	pts	1.7	1.6	1.4	1.8	2.0	2.2	5.1	2.8	1.4	1.0	0.8
Total	pts	1.3	1.4	1.1	1.7	1.4	2.3	4.3	2.2	1.0	0.9	0.6
Participation rate	pts	1.4	1.5	1.9	2.2	1.9	2.6	3.8	3.1	1.2	1.2	0.8
Unemployment to population ratio – looking for f/t work	pts	0.6	0.7	0.6	0.8	0.7	1.2	1.6	1.0	0.5	0.4	0.3

STANDARD ERRORS *continued*

MOVEMENT ESTIMATES

The following example illustrates how to use the standard error to interpret a movement estimate. Let us say that one month the published level estimate for females employed part time in Australia is 1,890,000; the next month the published level estimate is 1,900,000. The calculated standard error for the movement estimate is 10,600. The standard error is then used to interpret the published movement estimate of 10,000. For instance, the standard error of 10,600 indicates that:

- There are approximately two chances in three that the real movement between the two months falls within the range -600 to 20,600 (10,000 + or - 10,600)
- There are approximately nineteen chances in twenty that the real movement falls within the range -11,200 to 31,200 (10,000 + or - 21,200).

The following table shows the standard errors for this month's movement estimates.

										AUSTRALIA										
										Males	Females	Persons								
										NSW	Vic.	Qld	SA	WA	Tas.	NT	ACT			
Aged 15 years and over																				
Employed																				
Full time	'000	10.0	7.7	7.1	3.2	4.0	1.3	1.1	1.1	14.3	11.4	16.6								
Part time	'000	7.1	5.6	5.0	2.4	3.0	1.0	0.7	0.7	7.6	10.5	11.8								
Total	'000	11.1	8.6	7.9	3.6	4.5	1.4	1.2	1.2	15.1	14.0	18.7								
Unemployed																				
Looking for f/t work	'000	3.9	3.0	2.6	1.3	1.5	0.5	0.4	0.4	5.1	4.5	6.1								
Looking for p/t work	'000	2.9	2.2	1.8	0.9	1.2	0.3	0.3	0.3	3.2	3.7	4.4								
Total	'000	4.4	3.4	2.9	1.4	1.7	0.6	0.5	0.4	5.5	5.3	6.9								
Labour force	'000	11.4	8.8	8.0	3.7	4.5	1.5	1.2	1.2	15.4	14.3	19.1								
Not in labour force	'000	9.6	7.2	6.4	3.1	3.6	1.3	0.9	0.9	11.1	13.1	15.5								
Unemployment rate																				
Looking for f/t work	pts	0.2	0.2	0.2	0.2	0.2	0.3	0.5	0.3	0.1	0.2	0.1								
Looking for p/t work	pts	0.3	0.3	0.3	0.4	0.4	0.5	1.4	0.7	0.4	0.2	0.2								
Total	pts	0.1	0.1	0.1	0.2	0.2	0.2	0.4	0.2	0.1	0.1	0.1								
Participation rate	pts	0.2	0.2	0.3	0.3	0.3	0.4	0.8	0.5	0.2	0.2	0.1								
Aged 15-19 years																				
Employed																				
Full time	'000	3.2	2.4	2.5	1.0	1.5	0.4	0.3	0.3	4.5	3.6	5.3								
Part time	'000	4.0	3.0	2.9	1.3	1.6	0.5	0.4	0.5	4.6	5.2	6.3								
Total	'000	4.6	3.4	3.4	1.5	2.0	0.6	0.4	0.5	5.8	5.8	7.5								
Unemployed																				
Looking for f/t work	'000	2.2	1.7	1.5	0.7	0.9	0.3	0.2	0.2	2.8	2.5	3.3								
Looking for p/t work	'000	2.1	1.7	1.3	0.7	0.9	0.2	0.2	0.2	2.6	2.5	3.2								
Total	'000	2.7	2.1	1.7	0.9	1.1	0.3	0.3	0.3	3.3	3.1	4.1								
Labour force	'000	4.9	3.7	3.6	1.6	2.1	0.6	0.5	0.5	6.2	6.2	7.9								
Not in labour force	'000	4.2	3.3	2.6	1.3	1.7	0.6	0.4	0.4	5.2	5.1	6.6								
Unemployment rate																				
Looking for f/t work	pts	2.0	2.4	1.7	2.8	1.9	3.6	7.7	4.8	1.2	2.0	1.0								
Looking for p/t work	pts	1.3	1.3	1.1	1.7	1.7	2.2	4.3	2.3	1.1	0.8	0.6								
Total	pts	1.0	1.0	0.9	1.3	1.1	1.8	3.6	1.7	0.7	0.7	0.5								
Participation rate	pts	1.1	1.1	1.3	1.5	1.4	1.8	3.2	2.3	0.9	0.9	0.6								
Unemployment to population ratio - looking for f/t work																				
	pts	0.5	0.5	0.5	0.7	0.6	0.9	1.3	1.0	0.4	0.4	0.2								

GLOSSARY

Actively looking for work	Includes writing, telephoning or applying in person to an employer for work; answering an advertisement for a job; checking factory noticeboards or the touchscreens at the Centrelink offices; being registered with Centrelink as a jobseeker; checking or registering with any other employment agency; advertising or tendering for work; and contacting friends or relatives.
Attending full-time education	Persons aged 15–24 years enrolled at secondary or high school or enrolled as a full time student at a Technical and Further Education (TAFE) college, university, or other educational institution in the reference week.
Attending school	Persons aged 15–19 years enrolled at secondary or high school in the reference week.
Attending tertiary educational institution full time	Persons aged 15–24 years enrolled full time at a TAFE college, university, or other educational institution in the reference week, except those persons aged 15–19 years who were still attending school.
Civilian population aged 15 years and over	All usual residents of Australia aged 15 years and over except members of the permanent defence forces, certain diplomatic personnel of overseas governments customarily excluded from census and estimated population counts, overseas residents in Australia, and members of non-Australian defence forces (and their dependants) stationed in Australia.
Employed	<p>All persons aged 15 years and over who, during the reference week:</p> <ul style="list-style-type: none"> ■ worked for one hour or more for pay, profit, commission or payment in kind in a job or business, or on a farm (comprising employees, employers and own account workers); or ■ worked for one hour or more without pay in a family business or on a farm (i.e. contributing family workers); or ■ were employees who had a job but were not at work and were: <ul style="list-style-type: none"> ■ away from work for less than four weeks up to the end of the reference week; or ■ away from work for more than four weeks up to the end of the reference week and received pay for some or all of the four week period to the end of the reference week; or ■ away from work as a standard work or shift arrangement; or ■ on strike or locked out; or ■ on workers' compensation and expected to return to their job; or ■ were employers or own account workers, who had a job, business or farm, but were not at work.
Employment to population ratio	For any group, the number of employed persons expressed as a percentage of the civilian population in the same group.
Full-time workers	Employed persons who usually worked 35 hours or more a week (in all jobs) and those who, although usually working less than 35 hours a week, worked 35 hours or more during the reference week.
Labour force	For any group, persons who were employed or unemployed, as defined.
Labour force status	A classification of the civilian population aged 15 years and over into employed, unemployed or not in the labour force, as defined. The definitions conform closely to the international standard definitions adopted by the International Conferences of Labour Statisticians.
Not in labour force	Persons who were not in the categories employed or unemployed as defined.
Participation rate	For any group, the labour force expressed as a percentage of the civilian population aged 15 years and over in the same group.
Part-time workers	Employed persons who usually worked less than 35 hours a week (in all jobs) and either did so during the reference week, or were not at work in the reference week.

GLOSSARY *continued*

Response rate	The number of fully responding dwellings expressed as a percentage of the total number of dwellings excluding sample loss. Examples of sample loss include: dwellings where all persons are out of scope and/or coverage; vacant dwellings; dwellings under construction; dwellings converted to non-dwellings; derelict dwellings; and demolished dwellings.
Seasonally adjusted series	A time series of estimates with the estimated effects of normal seasonal variation removed. See Explanatory Notes 21 to 25 for more detail.
Trend series	A smoothed seasonally adjusted series of estimates. See Explanatory Notes 26 to 28 for more detail.
Unemployed	Persons aged 15 years and over who were not employed during the reference week, and: <ul style="list-style-type: none">■ had actively looked for full-time or part-time work at any time in the four weeks up to the end of the reference week and were available for work in the reference week; or■ were waiting to start a new job within four weeks from the end of the reference week and could have started in the reference week if the job had been available then.
Unemployed looking for full-time work	Unemployed persons who: <ul style="list-style-type: none">■ actively looked for full-time work; or■ were waiting to start a new full-time job.
Unemployed looking for part-time work	Unemployed persons who: <ul style="list-style-type: none">■ actively looked for part-time work only; or■ were waiting to start a new part-time job.
Unemployment rate	For any group, the number of unemployed persons expressed as a percentage of the labour force in the same group.
Unemployment to population ratio	For any group, the number of unemployed persons expressed as a percentage of the civilian population in the same group.

FOR MORE INFORMATION . . .

- INTERNET* **www.abs.gov.au** the ABS web site is the best place to start for access to summary data from our latest publications, information about the ABS, advice about upcoming releases, our catalogue, and Australia Now—a statistical profile.
- LIBRARY* A range of ABS publications is available from public and tertiary libraries Australia-wide. Contact your nearest library to determine whether it has the ABS statistics you require, or visit our web site for a list of libraries.
- CPI INFOLINE* For current and historical Consumer Price Index data, call 1902 981 074 (call cost 77c per minute).
- DIAL-A-STATISTIC* This service now provides only current Consumer Price Index statistics call 1900 986 400 (call cost 77c per minute).

INFORMATION SERVICE

Data already published that can be provided within five minutes will be free of charge. Our information consultants can also help you to access the full range of ABS information—ABS user pays services can be tailored to your needs, time frame and budget. Publications may be purchased. Specialists are on hand to help you with analytical or methodological advice.

- PHONE* 1300 135 070
- EMAIL* client.services@abs.gov.au
- FAX* 1300 135 211
- POST* Client Services, ABS, GPO Box 796, Sydney NSW 2001

WHY NOT SUBSCRIBE?

ABS subscription services provide regular, convenient and prompt deliveries of selected ABS publications and products as they are released. Email delivery of monthly and quarterly publications is available.

- PHONE* 1300 366 323
- EMAIL* subscriptions@abs.gov.au
- FAX* (03) 9615 7848
- POST* Subscription Services, ABS, GPO Box 2796Y, Melbourne Vic 3001



2620200002055

ISSN 1448 2819

RRP \$24.00